



- Engineering
- Stormwater Services
- Street Maintenance
- Transportation

September 22, 2008

MEMO TO: Prospective Bidders

SUBJECT: **Addendum No. 3**
City of Durham Contract SW-22:
2008 Apex Street Ramp Construction & Bridge Removal

This addendum provides revised instructions to correct items discovered in error and to clarify questions asked during the pre-bid conference. Please make these changes and add these instructions to the original proposal when submitting your bid.

Bid Item #18 Handrails

The title of Bid Item #18 has been changed from “Handrail on Steps” to “Handrails”. Please be advised that the engineer’s quantity estimate for this bid item has been reduced from 450 to 375 linear feet of handrail along the top of rail. Again, the revised quantity for Bid Item #18 Handrails is 375 linear feet. Please see attached revised Bid Form. The handrail design was omitted from the plans. Sheet LY-1 has been revised to reflect the design. Please see attached plan sheet LY-1

Handrails Specifications

The technical specification for Handrails was omitted. Please see the attached specification.

Bid Item #31 Landscaping

The bid item “Landscaping” for this item was omitted. The bid item has been added to the bid form. This item will be bid as lump sum. Please see the attached revised bid form. For the engineer’s estimate of quantities, please see the attached revised Landscaping plan, sheet LA1.

Landscaping Specifications

The technical specification for Landscaping was omitted. Please see the attached specification.

An updated set of plans including the changes detailed within this Addendum will be posted to the project website for download.

Please staple this addendum inside the front cover of the specifications, initial, and date the acknowledgement of amendments located on Page 18 of the Proposal as acknowledgement of its receipt. If you have any questions, contact me at (919) 560-4326, Ext. 245.

Kyle R. Butler
Contract Administrator

Note: The unit price for bid items in this contract are for furnishing and installing all items of work – in place, complete, and accepted as per approved plans, the City of Durham Standards and Specifications and the North Carolina Department of Transportation Standards and Specifications.

Apex Street Ramp Construction and Bridge Removal Bid Items

Item	Item Description	Qty.	Unit	Unit Price	Total Amount
1	1/4" HARDWARE CLOTH	50	LF		
2	15" CS PIPE CULVERTS, 0.064" THICK	12	LF		
3	2'-0" CONCRETE CURB & GUTTER	80	LF		
4	4" CONCRETE SIDEWALK	50	SY		
5	AGGREGATE BASE COURSE	190	TON		
6	ASPHALT BINDER FOR PLANT MIX, GRADE PG 64-22	10	TON		
7	ASPHALT CONC BASE COURSE, TYPE B25.0B	20	TON		
8	ASPHALT CONC INTERMEDIATE COURSE, TYPE I19.0B	3	TON		
9	ASPHALT CONC SURFACE COURSE, TYPE S9.5B	75	TON		
10	BOLLARD	2	EA		
11	CLEARING & GRUBBING	1	LS		
12	CONTRACTOR FURNISHED, TYPE ***SIGN	18	SF		
13	CONVERT EXISTING CATCH BASIN TO DROP INLET	1	EA		
14	CONVERT EXISTING CATCH BASIN TO JUNCTION BOX	1	EA		
15	DISPOSAL OF SIGN, A OR B (GROUND MOUNTED)	6	EA		
16	FINE GRADING	1	LS		
17	FRAME WITH TWO GRATES, STD 840.20	1	EA		
18	HANDRAIL	375	LF		
19	MOBILIZATION (5% MAX of TOTAL AMOUNT FOR SW-22)	1	LS		
20	PLAIN RIP RAP, CLASS B	4	TON		
21	REMOVAL OF EXISTING ASPHALT PAVEMENT	500	SY		
22	REMOVAL OF EXISTING APEX STREET BRIDGE	1	LS		
23	RETAINING WALL	600	SF		
24	SEDIMENT CONTROL STONE	1	TON		
25	SEEDING & MULCHING	1	ACRE		
26	SIGN ERECTION, TYPE *** (GROUND MOUNTED)	6	EA		
27	STONE FOR EROSION CONTROL, CLASS A	20	TON		
28	TEMPORARY SILT FENCE	900	LF		
29	UNCLASSIFIED EXCAVATION	1	LS		
30	UNDERCUT EXCAVATION	250	CY		
31	LANDSCAPING	1	LS		

TOTAL AMOUNT FOR CONTRACT SW-22

\$ _____

We agree to diligently perform the work in accordance with all contract documents, to complete such work within the period as outlined in the contract, and to begin work within ten (10) days after receipt of the Notice to Proceed from the Engineer.

HANDRAILS

The one and one half inch inside diameter, steel pipe handrails shall conform to the standard details as shown on plans. The quantity of handrails to be paid will be the number of linear feet of handrails, as measured along the top rail, complete in place and accepted. The quantity measured will be paid for at the contract price per linear foot "Handrail", complete in place, which price and payment will be full compensation for fabricating, transporting, erecting, painting, and furnishing all materials to complete and install the handrails.

The Contractor will be required to paint all handrails with one (1) coat of rustoleum and one (1) coat of aluminum paint. No additional compensations will be made for this work, but the cost shall be included in the unit price bid for "Handrails"

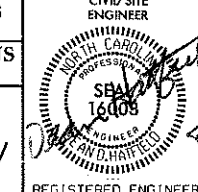
9/16/2008 9:41 AM P:\projects\NRI020A - Apex Street Bridge Demo\Construction Plan Review\NRI020A_04_RDY_PLAN.CPR.dgn
 REVISIONS

PROJECT REFERENCE NO. **LBG OR1020A** SHEET NO. **LY-1**

INCOMPLETE PLANS
DO NOT USE FOR R/W ACQUISITION

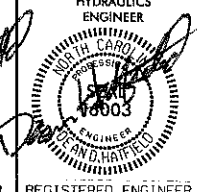
PRELIMINARY PLANS
DO NOT USE FOR CONSTRUCTION

CIVIL/SITE ENGINEER

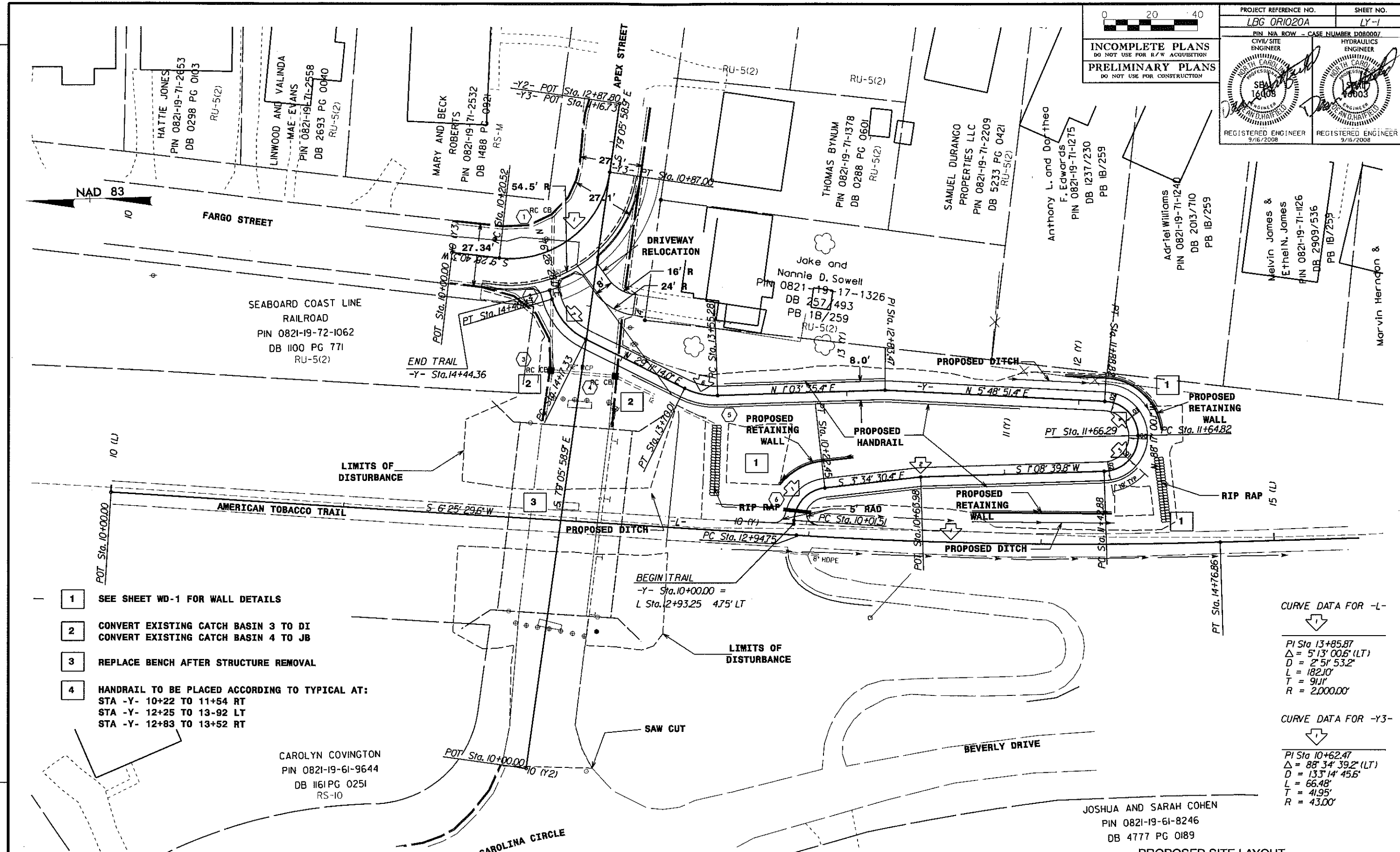


REGISTERED ENGINEER
9/16/2008

HYDRAULICS ENGINEER



REGISTERED ENGINEER
9/16/2008



- 1 SEE SHEET WD-1 FOR WALL DETAILS
- 2 CONVERT EXISTING CATCH BASIN 3 TO DI
CONVERT EXISTING CATCH BASIN 4 TO JB
- 3 REPLACE BENCH AFTER STRUCTURE REMOVAL
- 4 HANDRAIL TO BE PLACED ACCORDING TO TYPICAL AT:
STA -Y- 10+22 TO 11+54 RT
STA -Y- 12+25 TO 13-92 LT
STA -Y- 12+83 TO 13+52 RT

1	2	3	4	5 (TC)	6 (TC)	7 (TC)
PI Sta 10+14.10	PI Sta 10+63.98	PI Sta 11+57.73	PI Sta 11+80.30	PI Sta 12+83.47	PI Sta 13+62.80	PI Sta 14+29.58
$\Delta = 80^{\circ}00'00.0"$ (RT)		$\Delta = 89^{\circ}25'39.8"$ (LT)	$\Delta = 85^{\circ}54'08.5"$ (LT)	$\Delta = 28^{\circ}07'38.6"$ (RT)	$\Delta = 47^{\circ}15'14.0"$ (RT)	
D = 381'58"18.7"		D = 381'58"18.7"	D = 381'58"18.7"	D = 190'59"09.4"	D = 204'37"40.0"	
L = 20.94'		L = 23.41'	L = 22.49'	L = 14.73'	L = 23.09'	
T = 12.59'		T = 14.85'	T = 13.96'	T = 7.52'	T = 12.25'	
R = 15.00'		R = 15.00'	R = 15.00'	R = 30.00'	R = 28.00'	

CURVE DATA FOR -L-


PI Sta 13+85.87
 $\Delta = 5^{\circ}13'00.6"$ (LT)
 D = 2'51"53.2"
 L = 182.10'
 T = 9.11'
 R = 2,000.00'

CURVE DATA FOR -Y3-

PI Sta 10+62.47
 $\Delta = 88^{\circ}34'39.2"$ (LT)
 D = 133'14"45.6"
 L = 66.48'
 T = 41.95'
 R = 43.00'

PROPOSED SITE LAYOUT

APEX STREET TRAIL CONNECTION

REVISIONS TO APPROVED PLAN	CONSTRUCTION DRAWING
	 THE LOUIS BERGER GROUP, Inc. 1001 Wade Avenue, Suite 400 Raleigh, North Carolina 27605 (919)866-4400

EXTERIOR PLANTS

PART 1 - GENERAL

1.1 SUMMARY

- A. Section Includes:
 - 1. Plants.
 - 2. Planting soils.
 - 3. Tree stabilization.

1.2 DEFINITIONS

- A. Backfill: The earth used to replace or the act of replacing earth in an excavation.
- B. Balled and Burlapped Stock: Plants dug with firm, natural balls of earth in which they were grown, with ball size not less than sizes indicated, diameter and depth recommended by ANSI Z60.1 for type and size of plant required; wrapped with burlap, tied, rigidly supported, and drum laced with twine with the root flare visible at the surface of the ball as recommended by ANSI Z60.1.
- C. Balled and Potted Stock: Plants dug with firm, natural balls of earth in which they are grown and placed, unbroken, in a container. Ball size is not less than sizes indicated, diameter and depth recommended by ANSI Z60.1 for type and size of plant required.
- D. Bare-Root Stock: Plants with a well-branched, fibrous-root system developed by transplanting or root pruning, with soil or growing medium removed, and with not less than minimum root spread according to ANSI Z60.1 for type and size of plant required.
- E. Container-Grown Stock: Healthy, vigorous, well-rooted plants grown in a container, with a well-established root system reaching sides of container and maintaining a firm ball when removed from container. Container shall be rigid enough to hold ball shape and protect root mass during shipping and be sized according to ANSI Z60.1 for type and size of plant required.
- F. Duff Layer: The surface layer of native topsoil that is composed of mostly decayed leaves, twigs, and detritus.
- G. Fabric Bag-Grown Stock: Healthy, vigorous, well-rooted plants established and grown in-ground in a porous fabric bag with well-established root system reaching sides of fabric bag. Fabric bag size is not less than diameter, depth, and volume required by ANSI Z60.1 for type and size of plant.
- H. Finish Grade: Elevation of finished surface of planting soil.
- I. Manufactured Topsoil: Soil produced off-site by homogeneously blending mineral soils or sand with stabilized organic soil amendments to produce topsoil or planting soil.

- J. Pesticide: A substance or mixture intended for preventing, destroying, repelling, or mitigating a pest. This includes insecticides, miticides, herbicides, fungicides, rodenticides, and molluscicides. It also includes substances or mixtures intended for use as a plant regulator, defoliant, or desiccant.
- K. Pests: Living organisms that occur where they are not desired, or that cause damage to plants, animals, or people. These include insects, mites, grubs, mollusks (snails and slugs), rodents (gophers, moles, and mice), unwanted plants (weeds), fungi, bacteria, and viruses.
- L. Planting Area: Areas to be planted.
- M. Planting Soil: Standardized topsoil; existing, native surface topsoil; existing, in-place surface soil; imported topsoil; or manufactured topsoil that is modified with soil amendments and perhaps fertilizers to produce a soil mixture best for plant growth.
- N. Plant; Plants; Plant Material: These terms refer to vegetation in general, including trees, shrubs, vines, ground covers, ornamental grasses, bulbs, corms, tubers, or herbaceous vegetation.
- O. Root Flare: Also called "trunk flare." The area at the base of the plant's stem or trunk where the stem or trunk broadens to form roots; the area of transition between the root system and the stem or trunk.
- P. Stem Girdling Roots: Roots that encircle the stems (trunks) of trees below the soil surface.
- Q. Subgrade: Surface or elevation of subsoil remaining after excavation is complete, or the top surface of a fill or backfill before planting soil is placed.
- R. Subsoil: All soil beneath the topsoil layer of the soil profile, and typified by the lack of organic matter and soil organisms.
- S. Surface Soil: Soil that is present at the top layer of the existing soil profile at the Project site. In undisturbed areas, the surface soil is typically topsoil; but in disturbed areas such as urban environments, the surface soil can be subsoil.

1.3 SUBMITTALS

- A. Product Data: For each type of product indicated, including soils.
 - 1. Plant Materials: Include quantities, sizes, quality, and sources for plant materials.
 - 2. Pesticides and Herbicides: Include product label and manufacturer's application instructions specific to the Project.
 - 3. Compost Mulch: 1-pint volume of each organic mulch required; in sealed plastic bags labeled with composition of materials by percentage of weight and source of mulch. Each Sample shall be typical of the lot of material to be furnished; provide an accurate representation of color, texture, and organic makeup.
- B. Qualification Data: For qualified landscape Installer. Include list of similar projects completed by Installer demonstrating Installer's capabilities and experience. Include project names, addresses, and year completed, and include names and addresses of owners' contact persons.

- C. Product Certificates: For each type of manufactured product, from manufacturer, and complying with the following:
 - 1. Manufacturer's certified analysis of standard products.
 - 2. Analysis of other materials by a recognized laboratory made according to methods established by the Association of Official Analytical Chemists, where applicable.
- D. Material Test Reports: For imported.
- E. Maintenance Instructions: Recommended procedures to be established by Owner for maintenance of plants during a calendar year. Submit before start of required maintenance periods.
- F. Warranty: Sample of special warranty.

1.4 QUALITY ASSURANCE

- A. Installer Qualifications: A qualified landscape Installer whose work has resulted in successful establishment of plants.
 - 1. Professional Membership: Installer shall be a member in good standing of either the Professional Landcare Network or the American Nursery and Landscape Association.
 - 2. Experience: Five years' experience in landscape installation.
 - 3. Installer's Field Supervision: Require Installer to maintain an experienced full-time supervisor on Project site when work is in progress.
 - 4. Personnel Certifications: Installer's field supervisor shall have certification in all of the following categories from the Professional Landcare Network:
 - a. Certified Landscape Technician - Exterior, with installation and maintenance specialty area(s), designated CLT-Exterior.
 - b. Certified Landscape Technician - Interior, designated CLT-Interior.
 - c. Certified Ornamental Landscape Professional, designated COLP.
 - 5. Pesticide Applicator: State licensed, commercial.
- B. Soil-Testing Laboratory Qualifications: An independent or university laboratory, recognized by the State Department of Agriculture, with the experience and capability to conduct the testing indicated and that specializes in types of tests to be performed.
- C. Soil Analysis: For each unamended soil type, furnish soil analysis and a written report by a qualified soil-testing laboratory stating percentages of organic matter; gradation of sand, silt, and clay content; cation exchange capacity; sodium absorption ratio; deleterious material; pH; and mineral and plant-nutrient content of the soil.
 - 1. Testing methods and written recommendations shall comply with USDA's Handbook No. 60.
 - 2. The soil-testing laboratory shall oversee soil sampling; with depth, location, and number of samples to be taken per instructions from Architect. A minimum of three representative samples shall be taken from varied locations for each soil to be used or amended for planting purposes.

3. Report suitability of tested soil for plant growth.
 - a. Based upon the test results, state recommendations for soil treatments and soil amendments to be incorporated. State recommendations in weight per 1000 sq. ft. or volume per cu. yd. for nitrogen, phosphorus, and potash nutrients and soil amendments to be added to produce satisfactory planting soil suitable for healthy, viable plants.
 - b. Report presence of problem salts, minerals, or heavy metals, including aluminum, arsenic, barium, cadmium, chromium, cobalt, lead, lithium, and vanadium. If such problem materials are present, provide additional recommendations for corrective action.

- D. Provide quality, size, genus, species, and variety of plants indicated, complying with applicable requirements in ANSI Z60.1.
 1. Selection of plants purchased under allowances will be made by Architect, who will tag plants at their place of growth before they are prepared for transplanting.

- E. Measurements: Measure according to ANSI Z60.1. Do not prune to obtain required sizes.
 1. Trees and Shrubs: Measure with branches and trunks or canes in their normal position. Take height measurements from or near the top of the root flare for field-grown stock and container grown stock. Measure main body of tree or shrub for height and spread; do not measure branches or roots tip to tip. Take caliper measurements 6 inches above the root flare for trees up to 4-inch caliper size, and 12 inches above the root flare for larger sizes.
 2. Other Plants: Measure with stems, petioles, and foliage in their normal position.

- F. Plant Material Observation: Landscape Architect shall observe plant material at place of growth and field select each tree and shrub before planting for compliance with requirements for genus, species, variety, cultivar, size, and quality. Landscape Architect retains right to observe trees and shrubs further for size and condition of balls and root systems, pests, disease symptoms, injuries, and latent defects and to reject unsatisfactory or defective material at any time during progress of work. Remove rejected trees or shrubs immediately from Project site.
 1. Notify Landscape Architect of sources of planting materials seven days in advance of delivery to site.

- G. Preinstallation Conference: Conduct conference at Project site.

- 1.5 DELIVERY, STORAGE, AND HANDLING
 - A. Packaged Materials: Deliver packaged materials in original, unopened containers showing weight, certified analysis, name and address of manufacturer, and indication of conformance with state and federal laws if applicable.
 - B. Bulk Materials:
 1. Do not dump or store bulk materials near structures, utilities, walkways and pavements, or on existing turf areas or plants.

2. Provide erosion-control measures to prevent erosion or displacement of bulk materials, discharge of soil-bearing water runoff, and airborne dust reaching adjacent properties, water conveyance systems, or walkways.
 3. Accompany each delivery of bulk fertilizers, lime, and soil amendments with appropriate certificates.
- C. Deliver bare-root stock plants freshly dug. Immediately after digging up bare-root stock, pack root system in wet straw, hay, or other suitable material to keep root system moist until planting.
- D. Do not prune trees and shrubs before delivery. Protect bark, branches, and root systems from sun scald, drying, wind burn, sweating, whipping, and other handling and tying damage. Do not bend or bind-tie trees or shrubs in such a manner as to destroy their natural shape. Provide protective covering of plants during shipping and delivery. Do not drop plants during delivery and handling.
- E. Handle planting stock by root ball.
- F. Deliver plants after preparations for planting have been completed, and install immediately. If planting is delayed more than six hours after delivery, set plants and trees in their appropriate aspect (sun, filtered sun, or shade), protect from weather and mechanical damage, and keep roots moist.
1. Heel-in bare-root stock. Soak roots that are in dry condition in water for two hours. Reject dried-out plants.
 2. Set balled stock on ground and cover ball with soil, peat moss, sawdust, or other acceptable material.
 3. Do not remove container-grown stock from containers before time of planting.
 4. Water root systems of plants stored on-site deeply and thoroughly with a fine-mist spray. Water as often as necessary to maintain root systems in a moist, but not overly-wet condition.

1.6 PROJECT CONDITIONS

- A. Topsoil: Verify that topsoil placed in positions to receive plants and as described in the topsoil distribution plan meets the requirements of 02300 Earthwork prior to beginning landscape operations.
- B. Field Measurements: Verify actual grade elevations, service and utility locations, and dimensions of plantings and construction contiguous with new plantings by field measurements before proceeding with planting work.
- C. Interruption of Existing Services or Utilities: Do not interrupt services or utilities to facilities occupied by Owner or others unless permitted under the following conditions and then only after arranging to provide temporary services or utilities according to requirements indicated:
1. Notify Owner/university no fewer than five days in advance of proposed interruption of each service or utility.
 2. Do not proceed with interruption of services or utilities without Owner's/university written permission.

- D. Planting Restrictions: Plant during one of the following periods. Coordinate planting periods with maintenance periods to provide required maintenance from date of Substantial Completion.
 - 1. Spring Planting: March 1 to May 1.
 - 2. Fall Planting: October 1 to December 1.
- E. Weather Limitations: Proceed with planting only when existing and forecasted weather conditions permit planting to be performed when beneficial and optimum results may be obtained. Apply products during favorable weather conditions according to manufacturer's written instructions and warranty requirements.
- F. Coordination with Turf Areas (Lawns): Plant trees, shrubs, and other plants after finish grades are established and before planting turf areas unless otherwise indicated.
 - 1. When planting trees, shrubs, and other plants after planting turf areas, protect turf areas, and promptly repair damage caused by planting operations.

1.7 WARRANTY

- A. Special Warranty: Installer agrees to repair or replace plantings and accessories that fail in materials, workmanship, or growth within specified warranty period.
 - 1. Failures include, but are not limited to, the following:
 - a. Death and unsatisfactory growth, except for defects resulting from abuse, lack of adequate maintenance, or neglect by Owner, or incidents that are beyond Contractor's control.
 - b. Structural failures including plantings falling or blowing over.
 - c. Faulty performance of tree stabilization.
 - d. Deterioration of metals, metal finishes, and other materials beyond normal weathering.
 - 2. Warranty Periods from Date of Substantial Completion:
 - a. Trees, and Shrubs, Vines, and Ornamental Grasses: 12 months.
 - 3. Include the following remedial actions as a minimum:
 - a. Immediately remove dead plants and replace unless required to plant in the succeeding planting season.
 - b. Replace plants that are more than 25 percent dead or in an unhealthy condition at end of warranty period.
 - c. A limit of one replacement of each plant will be required except for losses or replacements due to failure to comply with requirements.
 - d. Provide extended warranty for period equal to original warranty period, for replaced plant material.

1.8 MAINTENANCE SERVICE

- A. Initial Maintenance Service for Trees and Shrubs: Provide maintenance by skilled employees of landscape Installer. Maintain as required in Part 3. Begin maintenance immediately after plants are installed and continue until plantings are acceptably healthy and well established but for not less than maintenance period below.
 - 1. Maintenance Period: 18 months from date of Substantial Completion.
- B. Initial Maintenance Service for Ground Cover and Other Plants: Provide maintenance by skilled employees of landscape Installer. Maintain as required in Part 3. Begin maintenance immediately after plants are installed and continue until plantings are acceptably healthy and well established but for not less than maintenance period below.
 - 1. Maintenance Period: 18 months from date of Substantial Completion.
- C. Continuing Maintenance Proposal: From Installer to Owner, in the form of a standard yearly (or other period) maintenance agreement, starting on date initial maintenance service is concluded. State services, obligations, conditions, and terms for agreement period and for future renewal options.

PART 2 - PRODUCTS

2.1 PLANT MATERIAL

- A. General: Furnish nursery-grown plants true to genus, species, variety, cultivar, stem form, shearing, and other features indicated in Plant Schedule or Plant Legend shown on Drawings and complying with ANSI Z60.1; and with healthy root systems developed by transplanting or root pruning. Provide well-shaped, fully branched, healthy, vigorous stock, densely foliated when in leaf and free of disease, pests, eggs, larvae, and defects such as knots, sun scald, injuries, abrasions, and disfigurement.
 - 1. Trees with damaged, crooked, or multiple leaders; tight vertical branches where bark is squeezed between two branches or between branch and trunk ("included bark"); crossing trunks; cut-off limbs more than 3/4 inch in diameter; or with stem girdling roots will be rejected.
 - 2. Collected Stock: Do not use plants harvested from the wild, from native stands, from an established landscape planting, or not grown in a nursery unless otherwise indicated.
- B. Provide plants of sizes, grades, and ball or container sizes complying with ANSI Z60.1 for types and form of plants required. Plants of a larger size may be used if acceptable to Architect, with a proportionate increase in size of roots or balls.
- C. Root-Ball Depth: Furnish trees and shrubs with root balls measured from top of root ball, which shall begin at root flare according to ANSI Z60.1. Root flare shall be visible before planting.
- D. Labeling: Label each plant of each variety, size, and caliper with a securely attached, waterproof tag bearing legible designation of common name and full scientific name, including genus and species. Include nomenclature for hybrid, variety, or cultivar, if applicable for the plant as shown on Drawings.

- E. If formal arrangements or consecutive order of plants is shown on Drawings, select stock for uniform height and spread, and number the labels to assure symmetry in planting.

2.2 INORGANIC SOIL AMENDMENTS

- A. Lime: ASTM C 602, agricultural liming material containing a minimum of 80 percent calcium carbonate equivalent and as follows:
 - 1. Class: T, with a minimum of 99 percent passing through No. 8 sieve and a minimum of 75 percent passing through No. 60 sieve.
 - 2. Class: O, with a minimum of 95 percent passing through No. 8 sieve and a minimum of 55 percent passing through No. 60 sieve.
 - 3. Provide lime in form of ground dolomitic limestone or calcitic limestone.
- B. Sulfur: Granular, biodegradable, and containing a minimum of 90 percent sulfur, with a minimum of 99 percent passing through No. 6 sieve and a maximum of 10 percent passing through No. 40 sieve.
- C. Iron Sulfate: Granulated ferrous sulfate containing a minimum of 20 percent iron and 10 percent sulfur.
- D. Aluminum Sulfate: Commercial grade, unadulterated.
- E. Perlite: Horticultural perlite, soil amendment grade.
- F. Agricultural Gypsum: Minimum 90 percent calcium sulfate, finely ground with 90 percent passing through No. 50 sieve.
- G. Sand: Clean, washed, natural or manufactured, and free of toxic materials.
- H. Diatomaceous Earth: Calcined, 90 percent silica, with approximately 140 percent water absorption capacity by weight.
- I. Zeolites: Mineral clinoptilolite with at least 60 percent water absorption by weight.

2.3 ORGANIC SOIL AMENDMENTS

- A. Compost: Well-composted, stable, and weed-free organic matter, pH range of 5.5 to 8; moisture content 35 to 55 percent by weight; 100 percent passing through 1-inch sieve; soluble salt content of 5 decisiemens/m; not exceeding 0.5 percent inert contaminants and free of substances toxic to plantings; and as follows:
 - 1. Organic Matter Content: 50 to 60 percent of dry weight.
 - 2. Feedstock: Agricultural, food, or industrial residuals; biosolids; yard trimmings; or source-separated or compostable mixed solid waste.
 - 3. In lieu of decomposed wood derivatives, mix partially decomposed wood derivatives with ammonium nitrate at a minimum rate of 0.15 lb/cu. ft. of loose sawdust or ground bark, or with ammonium sulfate at a minimum rate of 0.25 lb/cu. ft. of loose sawdust or ground bark.

- B. Manure: Well-rotted, unleached, stable or cattle manure containing not more than 25 percent by volume of straw, sawdust, or other bedding materials; free of toxic substances, stones, sticks, soil, weed seed, debris, and material harmful to plant growth.

2.4 FERTILIZERS

- A. Bonemeal: Commercial, raw or steamed, finely ground; a minimum of 4 percent nitrogen and 20 percent phosphoric acid.
- B. Superphosphate: Commercial, phosphate mixture, soluble; a minimum of 20 percent available phosphoric acid.
- C. Commercial Fertilizer: Commercial-grade complete fertilizer of neutral character, consisting of fast- and slow-release nitrogen, 50 percent derived from natural organic sources of urea formaldehyde, phosphorous, and potassium in the following composition:
 - 1. Composition: 1 lb/1000 sq. ft. of actual nitrogen, 4 percent phosphorous, and 2 percent potassium, by weight.
 - 2. Composition: Nitrogen, phosphorous, and potassium in amounts recommended in soil reports from a qualified soil-testing laboratory.
- D. Slow-Release Fertilizer: Granular or pelleted fertilizer consisting of 50 percent water-insoluble nitrogen, phosphorus, and potassium in the following composition:
 - 1. Composition: 20 percent nitrogen, 10 percent phosphorous, and 10 percent potassium, by weight.
 - 2. Composition: Nitrogen, phosphorous, and potassium in amounts recommended in soil reports from a qualified soil-testing laboratory.
- E. Planting Tablets: Tightly compressed chip type, long-lasting, slow-release, commercial-grade planting fertilizer in tablet form. Tablets shall break down with soil bacteria, converting nutrients into a form that can be absorbed by plant roots.
 - 1. Size: 10-gram tablets.
 - 2. Nutrient Composition: 20 percent nitrogen, 10 percent phosphorous, and 5 percent potassium, by weight plus micronutrients.
- F. Chelated Iron: Commercial-grade FeEDDHA for dicots and woody plants, and commercial-grade FeDTPA for ornamental grasses and monocots.

2.5 PLANTING SOILS

- A. Planting Soil Imported topsoil or manufactured topsoil from off-site sources. Obtain topsoil displaced from naturally well-drained construction or mining sites where topsoil occurs at least 4 inches deep; do not obtain from agricultural land, bogs, or marshes.
 - 1. Additional Properties of Imported Topsoil or Manufactured Topsoil: Screened and free of stones 1 inch or larger in any dimension; free of roots, plants, sod, clods, clay lumps, pockets of coarse sand, paint, paint washout, concrete slurry, concrete layers or chunks,

cement, plaster, building debris, oils, gasoline, diesel fuel, paint thinner, turpentine, tar, roofing compound, acid, and other extraneous materials harmful to plant growth; free of obnoxious weeds and invasive plants including quackgrass, Johnsongrass, poison ivy, nutsedge, nimblewill, Canada thistle, bindweed, bentgrass, wild garlic, ground ivy, perennial sorrel, and brome grass; not infested with nematodes; grubs; or other pests, pest eggs, or other undesirable organisms and disease-causing plant pathogens; friable and with sufficient structure to give good tilth and aeration. Continuous, air-filled pore space content on a volume/volume basis shall be at least 15 percent when moisture is present at field capacity. Soil shall have a field capacity of at least 15 percent on a dry weight basis.

2. Mix imported topsoil with the following soil amendments and fertilizers in the following quantities to produce planting soil:
 - a. Ratio of Loose Compost to Topsoil by Volume: 1:5.
 - b. Weight of Lime per 1000 Sq. Ft.: 50 lbs.
 - c. Weight of Sulfur per 1000 Sq. Ft.: 1 lb.
 - d. Weight of Agricultural Gypsum per 1000 Sq. Ft.: 50 lb.
 - e. Volume of Sand Plus 10 Percent Diatomaceous Earth per 1000 Sq. Ft.: Cubic yard.
 - f. Weight of Bonemeal per 1000 Sq. Ft.: 10 lb.
 - g. Weight of Superphosphate per 1000 Sq. Ft.: 10 lb.
 - h. Weight of Commercial Fertilizer per 1000 Sq. Ft.: 10 lb.
 - i. Weight of Slow-Release Fertilizer per 1000 Sq. Ft. (92.9 Sq. m): 10 lb.

2.6 MULCHES

- A. Organic Mulch: Free from deleterious materials and suitable as a top dressing of trees and shrubs, consisting of one of the following:
 1. Type: Shredded Hardwood Mulch: Triple shredded composted hardwood bark mulch, dark brown-black in color, free from trash, debris, contaminants, or any materials that may be harmful to plants. Submit sample for approval
 2. Size Range: 3 inches, 1/2 inch .
 3. Color: Natural.
- B. Compost Mulch: Well-composted, stable, and weed-free organic matter, pH range of 5.5 to 8; moisture content 35 to 55 percent by weight; 100 percent passing through 1-inch sieve; soluble salt content of 2 to 5 decisiemens/m; not exceeding 0.5 percent inert contaminants and free of substances toxic to plantings; and as follows:
 1. Organic Matter Content: 50 to 60 percent of dry weight.
 2. Feedstock: Agricultural, food, or industrial residuals; biosolids; yard trimmings; or source-separated or compostable mixed solid waste.

2.7 PESTICIDES

- A. General: Pesticide registered and approved by EPA, acceptable to authorities having jurisdiction, and of type recommended by manufacturer for each specific problem and as required for Project conditions and application. Do not use restricted pesticides unless authorized in writing by authorities having jurisdiction.
- B. Pre-Emergent Herbicide (Selective and Non-Selective): Effective for controlling the germination or growth of weeds within planted areas at the soil level directly below the mulch layer.
- C. Post-Emergent Herbicide (Selective and Non-Selective): Effective for controlling weed growth that has already germinated.

2.8 TREE STABILIZATION MATERIALS

A. Stakes and Guys:

1. Upright and Guy Stakes: Rough-sawn, sound, new hardwood, free of knots, holes, cross grain, and other defects, 2-by-2-inch nominal by length indicated, pointed at one end.
2. Wood Deadmen: Timbers measuring 8 inches in diameter and 48 inches long, treated with specified wood pressure-preservative treatment.
3. Flexible Ties: Wide rubber or elastic bands or straps of length required to reach stakes or turnbuckles or compression springs.
4. Guys and Tie Wires: ASTM A 641/A 641M, Class 1, galvanized-steel wire, two-strand, twisted, 0.106 inch in diameter.
5. Tree-Tie Webbing: UV-resistant polypropylene or nylon webbing with brass grommets.
6. Guy Cables: Five-strand, 3/16-inch- diameter, galvanized-steel cable, with zinc-coated turnbuckles or compression springs, a minimum of 3 inches long, with two 3/8-inch galvanized eyebolts.
7. Flags: Standard surveyor's plastic flagging tape, white, 6 inches long.
8. Proprietary Staking-and-Guying Devices: Proprietary stake and adjustable tie systems to secure each new planting by plant stem; sized as indicated and per manufacturer's written recommendations.

B. Root-Ball Stabilization Materials:

1. Upright Stakes and Horizontal Hold-Down: Rough-sawn, sound, new hardwood or softwood, free of knots, holes, cross grain, and other defects, 2-by-2-inch nominal by length indicated; stakes pointed at one end.
2. Wood Screws: ASME B18.6.1.
3. Proprietary Root-Ball Stabilization Devices: Proprietary at- or below-grade stabilization systems to secure each new planting by root ball; sized per manufacturer's written recommendations unless otherwise indicated.

2.9 MISCELLANEOUS PRODUCTS

- A. Antidesiccant: Water-insoluble emulsion, permeable moisture retarder, film forming, for trees and shrubs. Deliver in original, sealed, and fully labeled containers and mix according to manufacturer's written instructions.

- B. Burlap: Non-synthetic, biodegradable.
- C. Mycorrhizal Fungi: Dry, granular inoculant containing at least 5300 spores per lb of vesicular-arbuscular mycorrhizal fungi and 95 million spores per lb of ectomycorrhizal fungi, 33 percent hydrogel, and a maximum of 5.5 percent inert material.

PART 3 - EXECUTION

3.1 EXAMINATION

- A. Examine areas to receive plants for compliance with requirements and conditions affecting installation and performance.
 - 1. Verify that no foreign or deleterious material or liquid such as paint, paint washout, concrete slurry, concrete layers or chunks, cement, plaster, oils, gasoline, diesel fuel, paint thinner, turpentine, tar, roofing compound, or acid has been deposited in soil within a planting area.
 - 2. Do not mix or place soils and soil amendments in frozen, wet, or muddy conditions.
 - 3. Suspend soil spreading, grading, and tilling operations during periods of excessive soil moisture until the moisture content reaches acceptable levels to attain the required results.
 - 4. Uniformly moisten excessively dry soil that is not workable and which is too dusty.
- B. Proceed with installation only after unsatisfactory conditions have been corrected.
- C. If contamination by foreign or deleterious material or liquid is present in soil within a planting area, remove the soil and contamination as directed by Architect and replace with new planting soil.

3.2 PREPARATION

- A. Protect structures, utilities, sidewalks, pavements, and other facilities and turf areas and existing plants from damage caused by planting operations.
- B. Install erosion-control measures to prevent erosion or displacement of soils and discharge of soil-bearing water runoff or airborne dust to adjacent properties and walkways.
- C. Lay out individual tree and shrub locations and areas for multiple plantings. Stake locations, outline areas, adjust locations when requested, and obtain Architect's acceptance of layout before excavating or planting. Make minor adjustments as required.
- D. Lay out plants at locations directed by Architect. Stake locations of individual trees and shrubs and outline areas for multiple plantings.
- E. Apply antidesiccant to trees and shrubs using power spray to provide an adequate film over trunks (before wrapping), branches, stems, twigs, and foliage to protect during digging, handling, and transportation.
 - 1. If deciduous trees or shrubs are moved in full leaf, spray with antidesiccant at nursery before moving and again two weeks after planting.

- F. Wrap trees and shrubs with burlap fabric over trunks, branches, stems, twigs, and foliage to protect from wind and other damage during digging, handling, and transportation.

3.3 PLANTING AREA ESTABLISHMENT

- A. Loosen subgrade of planting areas to a minimum depth of 12 inches. Remove stones larger than 1 inch in any dimension and sticks, roots, rubbish, and other extraneous matter and legally dispose of them off Owner's property.
 - 1. Apply superphosphate fertilizer directly to subgrade before loosening.
 - 2. Thoroughly blend planting soil off-site before spreading.
 - a. Delay mixing fertilizer with planting soil if planting will not proceed within a few days.
 - b. Mix lime with dry soil before mixing fertilizer.
 - 3. Spread planting soil to a depth of 12 inches but not less than required to meet finish grades after natural settlement. Do not spread if planting soil or subgrade is frozen, muddy, or excessively wet.
 - a. Spread approximately one-half the thickness of planting soil over loosened subgrade. Mix thoroughly into top 4 inches of subgrade. Spread remainder of planting soil.
- B. Finish Grading: Grade planting areas to a smooth, uniform surface plane with loose, uniformly fine texture. Roll and rake, remove ridges, and fill depressions to meet finish grades.
- C. Before planting, obtain Landscape Architect's acceptance of finish grading; restore planting areas if eroded or otherwise disturbed after finish grading.
- D. Application of Mycorrhizal Fungi: At time directed by Landscape Architect, broadcast dry product uniformly over prepared soil per manufacturer's recommendation.

3.4 EXCAVATION FOR TREES AND SHRUBS

- A. Planting Pits and Trenches: Excavate circular planting pits with sides sloping inward at a 45-degree angle. Excavations with vertical sides are not acceptable. Trim perimeter of bottom leaving center area of bottom raised slightly to support root ball and assist in drainage away from center. Do not further disturb base. Ensure that root ball will sit on undisturbed base soil to prevent settling. Scarify sides of planting pit smeared or smoothed during excavation.
 - 1. Excavate approximately three times as wide as ball diameter for balled and burlapped and container-grown stock.
 - 2. Excavate at least 12 inches wider than root spread and deep enough to accommodate vertical roots for bare-root stock.
 - 3. Do not excavate deeper than depth of the root ball, measured from the root flare to the bottom of the root ball.
 - 4. If area under the plant was initially dug too deep, add soil to raise it to the correct level and thoroughly tamp the added soil to prevent settling.

5. Maintain required angles of repose of adjacent materials as shown on the Drawings. Do not excavate subgrades of adjacent paving, structures, hardscapes, or other new or existing improvements.
 6. Maintain supervision of excavations during working hours.
 7. Keep excavations covered or otherwise protected when unattended by Installer's personnel.
 8. If drain tile is shown on Drawings or required under planting areas, excavate to top of porous backfill over tile.
- B. Subsoil and topsoil removed from excavations may not be used as planting soil.
- C. Obstructions: Notify Landscape Architect if unexpected rock or obstructions detrimental to trees or shrubs are encountered in excavations.
1. Hardpan Layer: Drill 6-inch- diameter holes, 24 inches apart, into free-draining strata or to a depth of 10 feet , whichever is less, and backfill with free-draining material.
- D. Drainage: Notify Landscape Architect if subsoil conditions evidence unexpected water seepage or retention in tree or shrub planting pits.
- E. Fill excavations with water and allow to percolate away before positioning trees and shrubs.

3.5 TREE AND SHRUB PLANTING

- A. Before planting, verify that root flare is visible at top of root ball according to ANSI Z60.1. If root flare is not visible, remove soil in a level manner from the root ball to where the top-most root emerges from the trunk. After soil removal to expose the root flare, verify that root ball still meets size requirements.
- B. Remove stem girdling roots and kinked roots. Remove injured roots by cutting cleanly; do not break.
- C. Set balled and burlapped stock plumb and in center of planting pit or trench with root flare placed as directed by Landscape Architect above adjacent finish grades.
1. Use planting soil for backfill.
 2. After placing some backfill around root ball to stabilize plant, carefully cut and remove burlap, rope, and wire baskets from tops of root balls and from sides, but do not remove from under root balls. Remove pallets, if any, before setting. Do not use planting stock if root ball is cracked or broken before or during planting operation.
 3. Backfill around root ball in layers, tamping to settle soil and eliminate voids and air pockets. When planting pit is approximately one-half filled, water thoroughly before placing remainder of backfill. Repeat watering until no more water is absorbed.
 4. Place planting tablets in each planting pit when pit is approximately one-half filled; in amounts recommended in soil reports from soil-testing laboratory. Place tablets beside the root ball about 1 inch from root tips; do not place tablets in bottom of the hole.
 5. Continue backfilling process. Water again after placing and tamping final layer of soil.
- D. Set container-grown stock plumb and in center of planting pit or trench with root flare 2 inches above adjacent finish grades.

1. Use planting soil for backfill.
 2. Carefully remove root ball from container without damaging root ball or plant.
 3. Backfill around root ball in layers, tamping to settle soil and eliminate voids and air pockets. When planting pit is approximately one-half filled, water thoroughly before placing remainder of backfill. Repeat watering until no more water is absorbed.
 4. Place planting tablets in each planting pit when pit is approximately one-half filled; in amounts recommended in soil reports from soil-testing laboratory. Place tablets beside the root ball about 1 inch from root tips; do not place tablets in bottom of the hole.
 5. Continue backfilling process. Water again after placing and tamping final layer of soil.
- E. When planting on slopes, set the plant so the root flare on the uphill side is flush with the surrounding soil on the slope; the edge of the root ball on the downhill side will be above the surrounding soil. Apply enough soil to cover the downhill side of the root ball.

3.6 TREE STABILIZATION

- A. Install trunk stabilization as follows unless otherwise indicated:
1. Upright Staking and Tying: Stake trees of 2- through 5-inch caliper as requested by Landscape Architect. Stake trees of less than 2-inch caliper only as required to prevent wind tip out. Use a minimum of two stakes of length required to penetrate at least 18 inches below bottom of backfilled excavation and to extend at least 72 inches above grade. Set vertical stakes and space to avoid penetrating root balls or root masses.
 2. Use two stakes for trees up to 12 feet high and 2-1/2 inches or less in caliper; three stakes for trees less than 14 feet high and up to 4 inches in caliper. Space stakes equally around trees.
 3. Support trees with bands of flexible ties at contact points with tree trunk. Allow enough slack to avoid rigid restraint of tree.
 4. Support trees with two strands of tie wire, connected to the brass grommets of tree-tie webbing at contact points with tree trunk. Allow enough slack to avoid rigid restraint of tree.
- B. Staking and Guying: Stake and guy trees more than 14 feet in height and more than 3 inches in caliper unless otherwise indicated. Securely attach no fewer than three guys to stakes 30 inches long, driven to grade.
1. Site-Fabricated Staking-and-Guying Method:
 - a. For trees more than 6 inches in caliper, anchor guys to wood deadmen buried at least 36 inches below grade. Provide turnbuckle or compression spring for each guy wire and tighten securely.
 - b. Support trees with bands of flexible ties at contact points with tree trunk and reaching to turnbuckle or compression spring. Allow enough slack to avoid rigid restraint of tree.
 - c. Support trees with strands of cable or multiple strands of tie wire, connected to the brass grommets of tree-tie webbing at contact points with tree trunk and reaching to turnbuckle or compression spring. Allow enough slack to avoid rigid restraint of tree.
 - d. Attach flags to each guy wire, 30 inches above finish grade.
 - e. Paint turnbuckles or compression springs with luminescent white paint.

2. Proprietary Staking and Guying Device: Install staking and guying system sized and positioned as recommended by manufacturer unless otherwise indicated and according to manufacturer's written instructions.
- C. Root-Ball Stabilization: Install at- or below-grade stabilization system to secure each new planting by the root ball unless otherwise indicated.
1. Wood Hold-Down Method: Place vertical stakes against side of root ball and drive them into subsoil; place horizontal wood hold-down stake across top of root ball and screw at each end to one of the vertical stakes.
 - a. Install stakes of length required to penetrate at least to the dimension shown on Drawings below bottom of backfilled excavation. Saw stakes off at horizontal stake.
 - b. Install screws through horizontal hold-down and penetrating at least 1 inch (25 mm) into stakes. Pre-drill holes if necessary to prevent splitting wood.
 - c. Install second set of stakes on other side of root trunk for larger trees as indicated.
 2. Proprietary Root-Ball Stabilization Device: Install root-ball stabilization system sized and positioned as recommended by manufacturer unless otherwise indicated and according to manufacturer's written instructions.

3.7 ROOT-BARRIER INSTALLATION

- A. Install root barrier where trees are planted within 60 inches of paving or other hardscape elements, such as walls, curbs, and walkways unless otherwise shown on Drawings.
- B. Align root barrier vertically and run it linearly along and adjacent to the paving or other hardscape elements to be protected from invasive roots.
- C. Install root barrier continuously for a distance of 60 inches in each direction from the tree trunk, for a total distance of 10 feet per tree. If trees are spaced closer, use a single continuous piece of root barrier.
 1. Position top of root barrier per landscape architect's recommendations.
 2. Overlap root barrier a minimum of 12 inches at joints.
 3. Do not distort or bend root barrier during construction activities.
 4. Do not install root barrier surrounding the root ball of tree.

3.8 PLANTING AREA MULCHING

- A. Install weed-control barriers before mulching according to manufacturer's written instructions. Completely cover area to be mulched, overlapping edges a minimum of 12 inches and secure seams with galvanized pins.
- B. Mulch backfilled surfaces of planting areas and other areas indicated.
 1. Organic Mulch in Planting Areas: Apply 3-inch average thickness of organic mulch extending 12 inches over whole surface of planting area, and finish level with adjacent finish grades. Do not place mulch within 6 inches of trunks or stems.

3.9 PLANT MAINTENANCE

- A. Maintain plantings by pruning, cultivating, watering, weeding, fertilizing, mulching, restoring planting saucers, adjusting and repairing tree-stabilization devices, resetting to proper grades or vertical position, and performing other operations as required to establish healthy, viable plantings. Spray or treat as required to keep trees and shrubs free of insects and disease.
- B. Fill in as necessary soil subsidence that may occur because of settling or other processes. Replace mulch materials damaged or lost in areas of subsidence.
- C. Apply treatments as required to keep plant materials, planted areas, and soils free of pests and pathogens or disease. Use integrated pest management practices whenever possible to minimize the use of pesticides and reduce hazards. Treatments include physical controls such as hosing off foliage, mechanical controls such as traps, and biological control agents.

3.10 PESTICIDE APPLICATION

- A. Apply pesticides and other chemical products and biological control agents in accordance with authorities having jurisdiction and manufacturer's written recommendations. Coordinate applications with Owner's operations and others in proximity to the Work. Notify Owner before each application is performed.
- B. Pre-Emergent Herbicides (Selective and Non-Selective): Apply to tree, shrub, and ground-cover areas in accordance with manufacturer's written recommendations. Do not apply to seeded areas.
- C. Post-Emergent Herbicides (Selective and Non-Selective): Apply only as necessary to treat already-germinated weeds and in accordance with manufacturer's written recommendations.

3.11 CLEANUP AND PROTECTION

- A. During planting, keep adjacent paving and construction clean and work area in an orderly condition.
- B. Protect plants from damage due to landscape operations and operations of other contractors and trades. Maintain protection during installation and maintenance periods. Treat, repair, or replace damaged plantings.
- C. After installation and before Substantial Completion, remove nursery tags, nursery stakes, tie tape, labels, wire, burlap, and other debris from plant material, planting areas, and Project site.

3.12 DISPOSAL

- A. Remove surplus soil and waste material including excess subsoil, unsuitable soil, trash, and debris and legally dispose of them off Owner's property.

LAWNS AND GRASSES

PART 1 - GENERAL

1.1 SUMMARY

A. Section Includes:

1. Seeding.

1.2 DEFINITIONS

- A. Finish Grade: Elevation of finished surface of planting soil.
- B. Manufactured Topsoil: Soil produced off-site by homogeneously blending mineral soils or sand with stabilized organic soil amendments to produce topsoil or planting soil.
- C. Pesticide: A substance or mixture intended for preventing, destroying, repelling, or mitigating a pest. This includes insecticides, miticides, herbicides, fungicides, rodenticides, and molluscicides. It also includes substances or mixtures intended for use as a plant regulator, defoliant, or desiccant.
- D. Pests: Living organisms that occur where they are not desired or that cause damage to plants, animals, or people. These include insects, mites, grubs, mollusks (snails and slugs), rodents (gophers, moles, and mice), unwanted plants (weeds), fungi, bacteria, and viruses.
- E. Planting Soil: Standardized topsoil; existing, native surface topsoil; existing, in-place surface soil; imported topsoil; or manufactured topsoil that is modified with soil amendments and perhaps fertilizers to produce a soil mixture best for plant growth.
- F. Subgrade: Surface or elevation of subsoil remaining after excavation is complete or top surface of a fill or backfill before planting soil is placed.
- G. Subsoil: All soil beneath the topsoil layer of the soil profile, and typified by the lack of organic matter and soil organisms.
- H. Surface Soil: Soil that is present at the top layer of the existing soil profile at the Project site. In undisturbed areas, the surface soil is typically topsoil, but in disturbed areas such as urban environments, the surface soil can be subsoil.

1.3 SUBMITTALS

A. Product Data: For each type of product indicated.

1. Pesticides and Herbicides: Include product label and manufacturer's application instructions specific to this Project.

- B. Certification of Grass Seed: From seed vendor for each grass-seed monostand or mixture stating the botanical and common name, percentage by weight of each species and variety, and percentage of purity, germination, and weed seed. Include the year of production and date of packaging.
- C. Product Certificates: For soil amendments and fertilizers, from manufacturer.
- D. Material Test Reports: For imported or manufactured topsoil.

1.4 QUALITY ASSURANCE

- A. Inspection: Inspect topsoil prior to lawn and seeding operations to insure Base Topsoil is properly placed and prepared.
- B. Soil-Testing Laboratory Qualifications: An independent laboratory or university laboratory, recognized by the State Department of Agriculture, with the experience and capability to conduct the testing indicated and that specializes in types of tests to be performed.
- C. Soil Analysis: For each unamended soil type, furnish soil analysis and a written report by a qualified soil-testing laboratory stating percentages of organic matter; gradation of sand, silt, and clay content; cation exchange capacity; sodium absorption ratio; deleterious material; pH; and mineral and plant-nutrient content of the soil.
 - 1. Testing methods and written recommendations shall comply with USDA's Handbook No. 60.
 - 2. The soil-testing laboratory shall oversee soil sampling, with depth, location, and number of samples to be taken per instructions from Architect. A minimum of three representative samples shall be taken from varied locations for each soil to be used or amended for planting purposes.
 - 3. Report suitability of tested soil for turf growth.
 - a. Based on the test results, state recommendations for soil treatments and soil amendments to be incorporated. State recommendations in weight per 1000 sq. ft. or volume per cu. yd. for nitrogen, phosphorus, and potash nutrients and soil amendments to be added to produce satisfactory planting soil suitable for healthy, viable plants.
 - b. Report presence of problem salts, minerals, or heavy metals, including aluminum, arsenic, barium, cadmium, chromium, cobalt, lead, lithium, and vanadium. If such problem materials are present, provide additional recommendations for corrective action.

1.5 DELIVERY, STORAGE, AND HANDLING

- A. Seed and Other Packaged Materials: Deliver packaged materials in original, unopened containers showing weight, certified analysis, name and address of manufacturer, and indication of conformance with state and federal laws, as applicable.
- B. Bulk Materials:

1. Do not dump or store bulk materials near structures, utilities, walkways and pavements, or on existing turf areas or plants.
2. Accompany each delivery of bulk fertilizers, lime, and soil amendments with appropriate certificates.

1.6 PROJECT CONDITIONS

- A. Planting Restrictions: Plant during one of the following periods. Coordinate planting periods with initial maintenance periods to provide required maintenance from date of Substantial Completion.
 1. Fall Planting: December – February.
- B. Weather Limitations: Proceed with planting only when existing and forecasted weather conditions permit planting to be performed when beneficial and optimum results may be obtained. Apply products during favorable weather conditions according to manufacturer's written instructions.

1.7 MAINTENANCE SERVICE

- A. Initial Turf Maintenance Service: Provide full maintenance by skilled employees of landscape Installer. Maintain as required in Part 3. Begin maintenance immediately after each area is planted and continue until acceptable turf is established but for not less than the following periods:
 1. Seeded Turf: 60 days from date of Substantial Completion.
 - a. When initial maintenance period has not elapsed before end of planting season, or if turf is not fully established, continue maintenance during next planting season.

PART 2 - PRODUCTS

2.1 SEED

- A. Grass Seed: Fresh, clean, dry, new-crop seed complying with AOSA's "Journal of Seed Technology; Rules for Testing Seeds" for purity and germination tolerances.
- B. Seed Species: State-certified seed of grass species as follows:
 1. Sun and Partial Shade: Proportioned by weight as follows:
 - a. 100 percent hybridized tall fescue varieties

2.2 INORGANIC SOIL AMENDMENTS

- A. Lime: ASTM C 602, agricultural liming material containing a minimum of 80 percent calcium carbonate equivalent and as follows:

1. Class: T, with a minimum of 99 percent passing through No. 8 sieve and a minimum of 75 percent passing through No. 60 sieve.
 2. Class: O, with a minimum of 95 percent passing through No. 8 sieve and a minimum of 55 percent passing through No. 60 sieve.
 3. Provide lime in form of ground dolomitic limestone.
- B. Sulfur: Granular, biodegradable, containing a minimum of 90 percent sulfur, and with a minimum of 99 percent passing through No. 6 sieve and a maximum of 10 percent passing through No. 40 sieve.
- C. Iron Sulfate: Granulated ferrous sulfate containing a minimum of 20 percent iron and 10 percent sulfur.
- D. Aluminum Sulfate: Commercial grade, unadulterated.
- E. Perlite: Horticultural perlite, soil amendment grade.
- F. Agricultural Gypsum: Minimum 90 percent calcium sulfate, finely ground with 90 percent passing through No. 50 sieve.
- G. Sand: Clean, washed, natural or manufactured, and free of toxic materials.
- H. Diatomaceous Earth: Calcined, 90 percent silica, with approximately 140 percent water absorption capacity by weight.
- I. Zeolites: Mineral clinoptilolite with at least 60 percent water absorption by weight.

2.3 ORGANIC SOIL AMENDMENTS

- A. Compost: Well-composted, stable, and weed-free organic matter, pH range of 5.5 to 8; moisture content 35 to 55 percent by weight; 100 percent passing through 1/2-inch sieve; soluble salt content of no greater than 5 decisiemens/m; not exceeding 0.5 percent inert contaminants and free of substances toxic to plantings; and as follows:
1. Organic Matter Content: 50 to 60 percent of dry weight.
 2. Feedstock: Agricultural, food, or industrial residuals; biosolids; yard trimmings; or source-separated or compostable mixed solid waste.
- B. Sphagnum Peat: Partially decomposed sphagnum peat moss, finely divided or of granular texture, with a pH range of 3.4 to 4.8.
- C. Manure: Well-rotted, unleached, stable or cattle manure containing not more than 25 percent by volume of straw, sawdust, or other bedding materials; free of toxic substances, stones, sticks, soil, weed seed, and material harmful to plant growth.

2.4 FERTILIZERS

- A. Bonemeal: Commercial, raw or steamed, finely ground; a minimum of 4 percent nitrogen and 10 percent phosphoric acid.

- B. Superphosphate: Commercial, phosphate mixture, soluble; a minimum of 20 percent available phosphoric acid.
- C. Commercial Fertilizer: Commercial-grade complete fertilizer of neutral character, consisting of fast- and slow-release nitrogen, 50 percent derived from natural organic sources of urea formaldehyde, phosphorous, and potassium in the following composition:
 - 1. Composition: 1 lb/1000 sq. ft. of actual nitrogen, 4 percent phosphorous, and 2 percent potassium, by weight.
 - 2. Composition: Nitrogen, phosphorous, and potassium in amounts recommended in soil reports from a qualified soil-testing laboratory.
- D. Slow-Release Fertilizer: Granular or pelleted fertilizer consisting of 50 percent water-insoluble nitrogen, phosphorus, and potassium in the following composition:
 - 1. Composition: 20 percent nitrogen, 10 percent phosphorous, and 10 percent potassium, by weight.
 - 2. Composition: Nitrogen, phosphorous, and potassium in amounts recommended in soil reports from a qualified soil-testing laboratory.

2.5 PLANTING SOILS

- A. Base Planting Soil - Imported topsoil or manufactured topsoil from off-site sources. Obtain topsoil displaced from naturally well-drained construction or mining sites where topsoil occurs at least 4 inches deep; do not obtain from agricultural land, bogs or marshes.
 - 1. Additional Properties of Imported Topsoil or Manufactured Topsoil: Screened and free of stones 1 inch or larger in any dimension; free of roots, plants, sod, clods, clay lumps, pockets of coarse sand, paint, paint washout, concrete slurry, concrete layers or chunks, cement, plaster, building debris, oils, gasoline, diesel fuel, paint thinner, turpentine, tar, roofing compound, acid, and other extraneous materials harmful to plant growth; free of obnoxious weeds and invasive plants including quackgrass, Johnsongrass, poison ivy, nutsedge, nimblewill, Canada thistle, bindweed, bentgrass, wild garlic, ground ivy, perennial sorrel, and brome grass; not infested with nematodes, grubs, other pests, pest eggs, or other undesirable organisms and disease-causing plant pathogens; friable and with sufficient structure to give good tilth and aeration. Continuous, air-filled, pore-space content on a volume/volume basis shall be at least 15 percent when moisture is present at field capacity. Soil shall have a field capacity of at least 15 percent on a dry weight basis.
 - 2. Mix imported topsoil or manufactured topsoil with the following soil amendments and fertilizers in the following quantities to produce planting soil:
 - a. Ratio of Loose Compost to Topsoil by Volume: 1:4.
 - b. Weight of Lime per 1000 Sq. Ft.: 50 lbs.
 - c. Weight of Sulfur per 1000 Sq. Ft.: 1 lb..
 - d. Weight of Agricultural Gypsum per 1000 Sq. Ft. : 50 lbs.
 - e. Weight of Bonemeal per 1000 Sq. Ft.: 1 lb.
 - f. Weight of Superphosphate per 1000 Sq. Ft.: 1 lb..
 - g. Weight of Commercial Fertilizer per 1000 Sq. Ft.: 1 lb.
 - h. Weight of Slow-Release Fertilizer per 1000 Sq. Ft.: 1 lb.

2.6 MULCHES

- A. Straw Mulch: Provide air-dry, clean, mildew- and seed-free, salt hay or threshed straw of wheat, rye, oats, or barley.
- B. Sphagnum Peat Mulch: Partially decomposed sphagnum peat moss, finely divided or of granular texture, and with a pH range of 3.4 to 4.8.
- C. Muck Peat Mulch: Partially decomposed moss peat, native peat, or reed-sedge peat, finely divided or of granular texture, with a pH range of 6 to 7.5, and having a water-absorbing capacity of 1100 to 2000 percent.
- D. Compost Mulch: Well-composted, stable, and weed-free organic matter, pH range of 5.5 to 8; moisture content 35 to 55 percent by weight; 100 percent passing through 1-inch sieve; soluble salt content of 2 to 5 decisiemens/m; not exceeding 0.5 percent inert contaminants and free of substances toxic to plantings; and as follows:
 - 1. Organic Matter Content: 50 to 60 percent of dry weight.
 - 2. Feedstock: Agricultural, food, or industrial residuals; biosolids; yard trimmings; or source-separated or compostable mixed solid waste.
- E. Fiber Mulch: Biodegradable, dyed-wood, cellulose-fiber mulch; nontoxic and free of plant-growth or germination inhibitors; with a maximum moisture content of 15 percent and a pH range of 4.5 to 6.5.
- F. Nonasphaltic Tackifier: Colloidal tackifier recommended by fiber-mulch manufacturer for slurry application; nontoxic and free of plant-growth or germination inhibitors.
- G. Asphalt Emulsion: ASTM D 977, Grade SS-1; nontoxic and free of plant-growth or germination inhibitors.

2.7 PESTICIDES

- A. General: Pesticide, registered and approved by EPA, acceptable to authorities having jurisdiction, and of type recommended by manufacturer for each specific problem and as required for Project conditions and application. Do not use restricted pesticides unless authorized in writing by authorities having jurisdiction.
- B. Pre-Emergent Herbicide (Selective and Non-Selective): Effective for controlling the germination or growth of weeds within planted areas at the soil level directly below the mulch layer.
- C. Post-Emergent Herbicide (Selective and Non-Selective): Effective for controlling weed growth that has already germinated.

PART 3 - EXECUTION

3.1 EXAMINATION

- A. Examine areas to be planted for compliance with requirements and other conditions affecting performance.
 - 1. Verify that no foreign or deleterious material or liquid such as paint, paint washout, concrete slurry, concrete layers or chunks, cement, plaster, oils, gasoline, diesel fuel, paint thinner, turpentine, tar, roofing compound, or acid has been deposited in soil within a planting area.
 - 2. Do not mix or place soils and soil amendments in frozen, wet, or muddy conditions.
 - 3. Suspend soil spreading, grading, and tilling operations during periods of excessive soil moisture until the moisture content reaches acceptable levels to attain the required results.
 - 4. Uniformly moisten excessively dry soil that is not workable and which is too dusty.
- B. Proceed with installation only after unsatisfactory conditions have been corrected.
- C. If contamination by foreign or deleterious material or liquid is present in soil within a planting area, remove the soil and contamination as directed by Architect and replace with new planting soil.

3.2 PREPARATION

- A. Protect structures, utilities, sidewalks, pavements, and other facilities, trees, shrubs, and plantings from damage caused by planting operations.
 - 1. Protect grade stakes set by others until directed to remove them.

3.3 TURF AREA PREPARATION

- A. Limit turf subgrade preparation to areas to be planted.
- B. Newly Graded Subgrades: Loosen subgrade to a minimum depth of 8 inches. Remove stones larger than 1 inch in any dimension and sticks, roots, rubbish, and other extraneous matter from the surface and legally dispose of them off Owner's property.
 - 1. Apply superphosphate fertilizer directly to subgrade before loosening.
 - 2. Thoroughly blend planting soil off-site before spreading or spread topsoil, apply soil amendments and fertilizer on surface, and thoroughly blend planting soil.
 - a. Delay mixing fertilizer with planting soil if planting will not proceed within a few days.
 - b. Mix lime with dry soil before mixing fertilizer.
 - 3. Spread planting soil to a depth of 6 inches but not less than required to meet finish grades after light rolling and natural settlement. Do not spread if planting soil or subgrade is frozen, muddy, or excessively wet.
 - a. Spread approximately 1/2 the thickness of planting soil over loosened subgrade. Mix thoroughly into top 4 inches of subgrade. Spread remainder of planting soil.
- C. Finish Grading: Grade planting areas to a smooth, uniform surface plane with loose, uniformly fine texture. Grade to within plus or minus 1/2 inch of finish elevation. Roll and rake, remove

ridges, and fill depressions to meet finish grades. Limit finish grading to areas that can be planted in the immediate future.

- D. Moisten prepared area before planting if soil is dry. Water thoroughly and allow surface to dry before planting. Do not create muddy soil.
- E. Before planting, obtain Architect's acceptance of finish grading; restore planting areas if eroded or otherwise disturbed after finish grading.

3.4 SEEDING

- A. Sow seed with spreader or seeding machine. Do not broadcast or drop seed when wind velocity exceeds 5 mph . Evenly distribute seed by sowing equal quantities in two directions at right angles to each other.
 - 1. Do not use wet seed or seed that is moldy or otherwise damaged.
 - 2. Do not seed against existing trees. Limit extent of seed to outside edge of planting saucer.
- B. Sow seed at a total rate of 6 to 7 lb/1000 sq. ft.
- C. Rake seed lightly into top 1/8 inch of soil, roll lightly, and water with fine spray.
- D. Protect seeded areas with slopes exceeding 1:4 with erosion-control blankets and 1:6 with erosion-control fiber mesh installed and stapled according to manufacturer's written instructions.
- E. Protect seeded areas with slopes exceeding or equal to 1:3 with degradable rolled erosion control products, ASTM D6459.
- F. Protect seeded areas with erosion-control mats where shown on Drawings; install and anchor according to manufacturer's written instructions.
- G. Protect seeded areas with slopes not exceeding 1:6 by spreading straw mulch. Spread uniformly at a minimum rate of 2 tons/acre to form a continuous blanket 1-1/2 inches in loose thickness over seeded areas. Spread by hand, blower, or other suitable equipment.
 - 1. Anchor straw mulch by crimping into soil with suitable mechanical equipment.

3.5 TURF MAINTENANCE

- A. Maintain and establish turf by watering, fertilizing, weeding, mowing, trimming, replanting, and performing other operations as required to establish healthy, viable turf. Roll, regrade, and replant bare or eroded areas and remulch to produce a uniformly smooth turf. Provide materials and installation the same as those used in the original installation.
 - 1. Fill in as necessary soil subsidence that may occur because of settling or other processes. Replace materials and turf damaged or lost in areas of subsidence.
 - 2. In areas where mulch has been disturbed by wind or maintenance operations, add new mulch and anchor as required to prevent displacement.

3. Apply treatments as required to keep turf and soil free of pests and pathogens or disease. Use integrated pest management practices whenever possible to minimize the use of pesticides and reduce hazards.
- B. Watering: Install and maintain temporary piping, hoses, and turf-watering equipment to convey water from sources and to keep turf uniformly moist to a depth of 4 inches .
 1. Schedule watering to prevent wilting, puddling, erosion, and displacement of seed or mulch. Lay out temporary watering system to avoid walking over muddy or newly planted areas.
 2. Water turf with fine spray at a minimum rate of 1 inch per week unless rainfall precipitation is adequate.
 - C. Mow turf as soon as top growth is tall enough to cut. Repeat mowing to maintain specified height without cutting more than 1/3 of grass height. Remove no more than 1/3 of grass-leaf growth in initial or subsequent mowings. Do not delay mowing until grass blades bend over and become matted. Do not mow when grass is wet. Schedule initial and subsequent mowings to maintain the following grass height:
 1. Mow hybridized fescue to a height of 1-1/2 to 2 inches.
 - D. Turf Postfertilization: Apply fertilizer after initial mowing and when grass is dry.
 1. Use fertilizer that will provide actual nitrogen of at least 1 lb/1000 sq. ft. to turf area.

3.6 SATISFACTORY TURF

- A. Turf installations shall meet the following criteria as determined by Engineer:
 1. Satisfactory Seeded Turf: At end of maintenance period, a healthy, uniform, close stand of grass has been established, free of weeds and surface irregularities, with coverage exceeding 90 percent over any 10 sq. ft. and bare spots not exceeding 5 by 5 inches .
- B. Use specified materials to reestablish turf that does not comply with requirements and continue maintenance until turf is satisfactory.

3.7 PESTICIDE APPLICATION

- A. Apply pesticides and other chemical products and biological control agents in accordance with requirements of authorities having jurisdiction and manufacturer's written recommendations. Coordinate applications with Owner's operations and others in proximity to the Work. Notify Owner before each application is performed.
- B. Post-Emergent Herbicides (Selective and Non-Selective): Apply only as necessary to treat already-germinated weeds and in accordance with manufacturer's written recommendations.

3.8 CLEANUP AND PROTECTION

- A. Promptly remove soil and debris created by turf work from paved areas. Clean wheels of vehicles before leaving site to avoid tracking soil onto roads, walks, or other paved areas.

- B. Erect temporary fencing or barricades and warning signs as required to protect newly planted areas from traffic. Maintain fencing and barricades throughout initial maintenance period and remove after plantings are established.