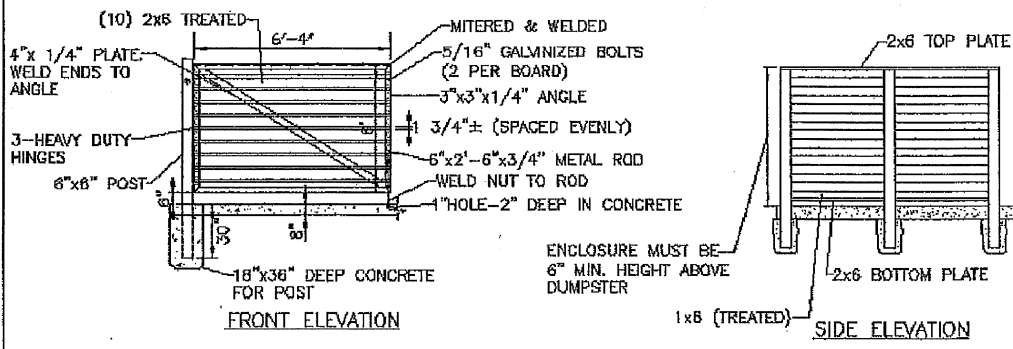
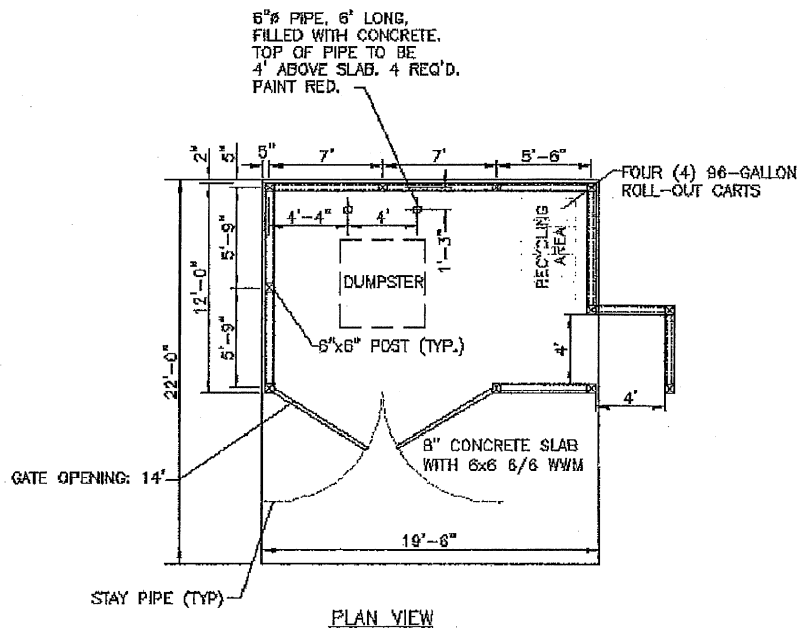


SILT FENCE

NTS

REV
DB-2
NTS 12-2



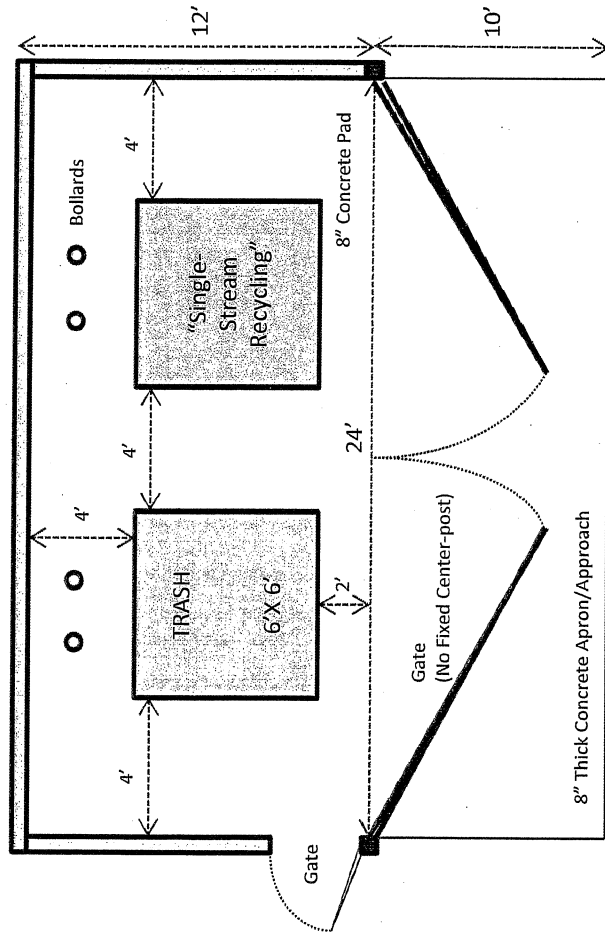
DUMPSTER PAD W/ RECYCLE AREA AND WOOD ENCLOSURE

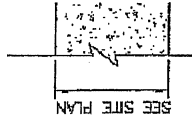
NTS

DA
SC
JOI
DR
CH

Single Gate Trash and Recycling Dumpster Enclosure

Not to Scale

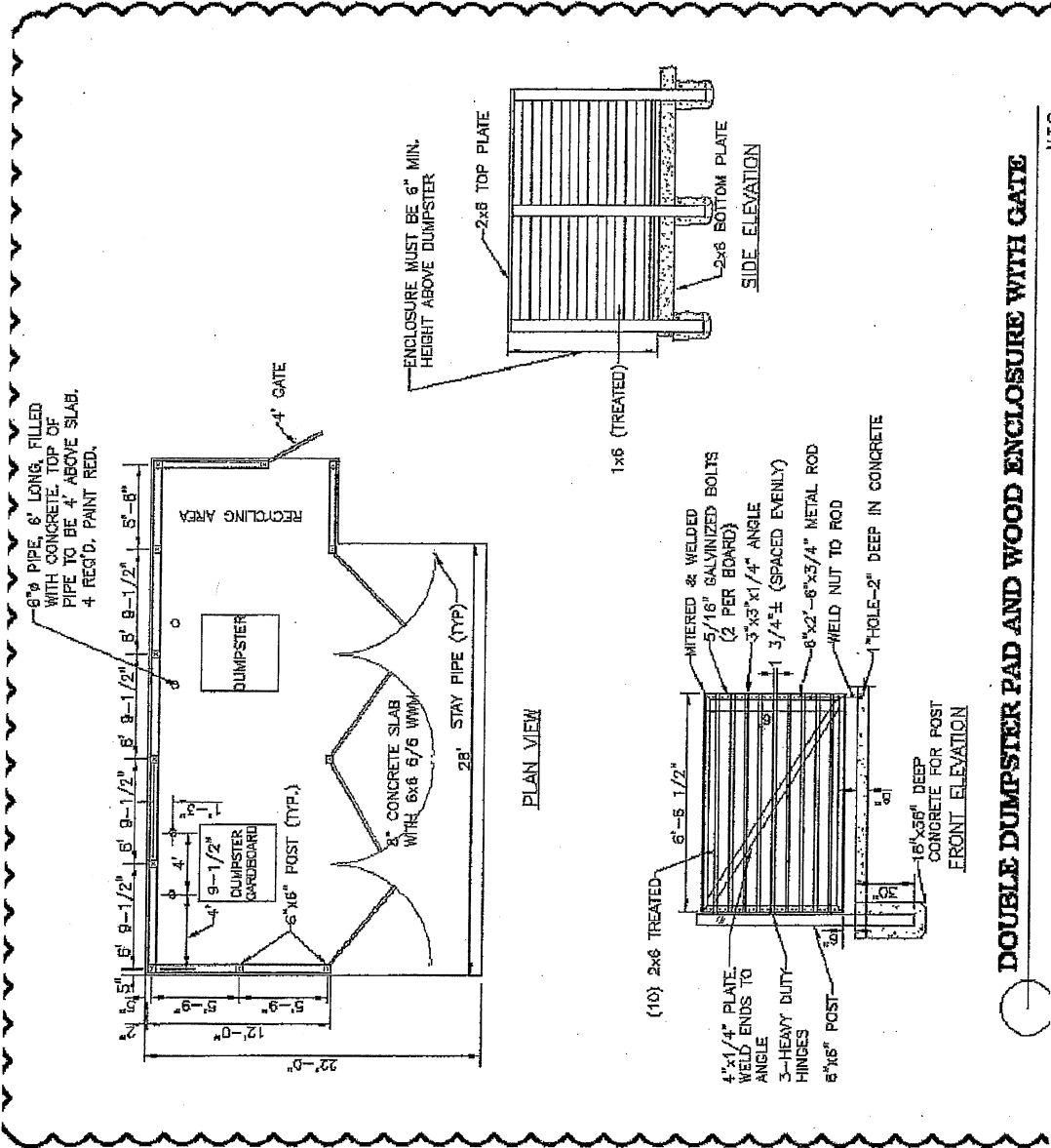




SEE SITE PLAN

R7-8 SIGN BOLT TO
CASHMIRA PLATED BO
WASHERS.

NOTE.



6"Ø PIPE, 6' LONG, FILLED
WITH CONCRETE. TOP OF
PIPE TO BE 4" ABOVE SLAB.
4' REC'D. PAINT RED.

ENCLOSURE MUST BE 6" MIN.
HEIGHT ABOVE DUMPSTER

2x6 TOP PLATE
2x6 BOTTOM PLATE
SIDE ELEVATION

PLAN VIEW

FRONT ELEVATION

(10) 2x6 TREATED
4"x1/4" PLATE
WELD ENDS TO
ANGLE
3-HEAVY DUTY
HINGES
6"x6" POST
MITERED & WELDED
5/16" GALVANIZED BOLTS
(2 PER BOARD)
3"x3"x1/4" ANGLE
3/4"± (SPACED EVENLY)
6"x2'-6"x5/4" METAL ROD
WELD NUT TO ROD
1" HOLE-2" DEEP IN CONCRETE
18"x56" DEEP
CONCRETE FOR POST

DOUBLE DUMPSTER PAD AND WOOD ENCLOSURE WITH GATE

N.T.S.

DIA. 1 1/8"
ØNG OUT

WELLS USED AS REQUIRED
N.C.D.O.T.

ONE HALF DEPTH CONC

MATERIAL AND
REQUIRED
STANDARD SPECS.

REAS

REQUIRE A DETECTABLE
WARNING SURFACE OF
COLOR TO CONTRAST WITH
ADJOINING SURFACES PER
ADA REQUIREMENTS.

DEPRESSED HANDICAP RAMP

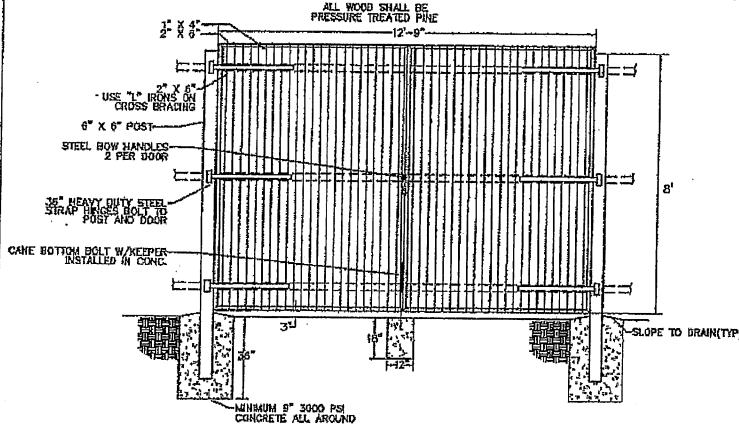
SCALE: NTS

SECTION
PLANES
) DURING
COURSE (1-2)
RISE (1-2)
ED OVERLAY
RED MATERIALS.

ARD
SPER
**DUTY
TAIL**
3

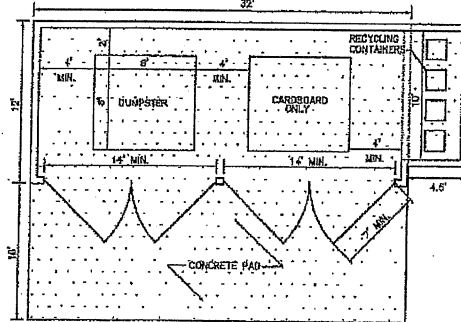
FINISH GRADE
OF RECYCLING TROUGH
VARIES SEE

RE
FOR



DUMPSTER/RECYCLING GATE DETAIL

NOT TO SCALE



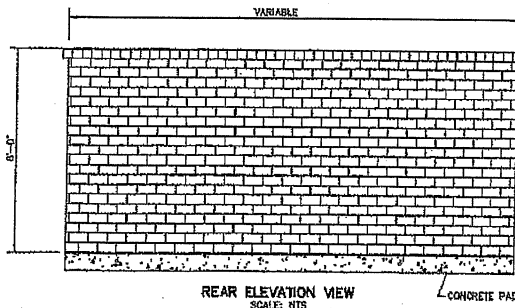
NOTE: VERIFY DUMPSTER SIZE WITH LOCAL TRASH MANAGEMENT CONSULTANT

DUMPSTER/RECYCLING DETAIL

NOT TO SCALE

NOTES:

1. WALL IS 8" CONCRETE BLOCK WITH 4" BRICK VENEER TO MATCH BUILDING EXTERIOR.
2. CONCRETE PAD IS 6" THICK 4,000 PSI AIRBOUND 20 DAY STRENGTH.
3. FENCE/WALL SHALL BE A MINIMUM OF 6" HIGHER THAN THE ITEM(S) BEING SCREENED.
4. DUMPSTER IS A MINIMUM OF 8 CUBIC YARDS.

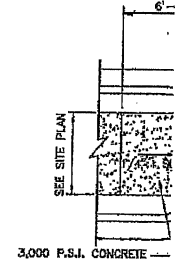


REAR ELEVATION VIEW

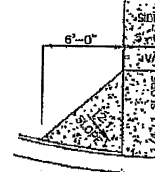
SCALE: RTS

**DOUBLE DUMPSTER/RECYCLING DETAIL
(BRICK ENCLOSURE TO MATCH BUILDING)**

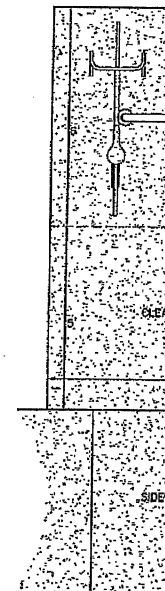
NOTE: RAMP AREA SHALL RD
DETECTABLE WARNING
COLOR TO CONTRAST
SURFACES PER ADA R



MEDIAN SIDE



HANDIC



PLA

STATE
HIGHWAY
DIVISION



STATE
HIGHWAY
DIVISION

STATE
HIGHWAY
DIVISION

NOTE
1.
2.
3.

