

BEST MANAGEMENT PRACTICES

Sediment Control in the Right of Way

Sediment and spills from digging in the right of way flows into storm drains and pollutes local waterways. Only rain is allowed down the storm drain in Durham. Storm drains empty straight into our waterways and it is illegal for anything but stormwater to go into them. Below are some examples of best management practices to use to prevent pollution, avoid fines, and keep our water clean.

SEDIMENT CONTROL DONT'S

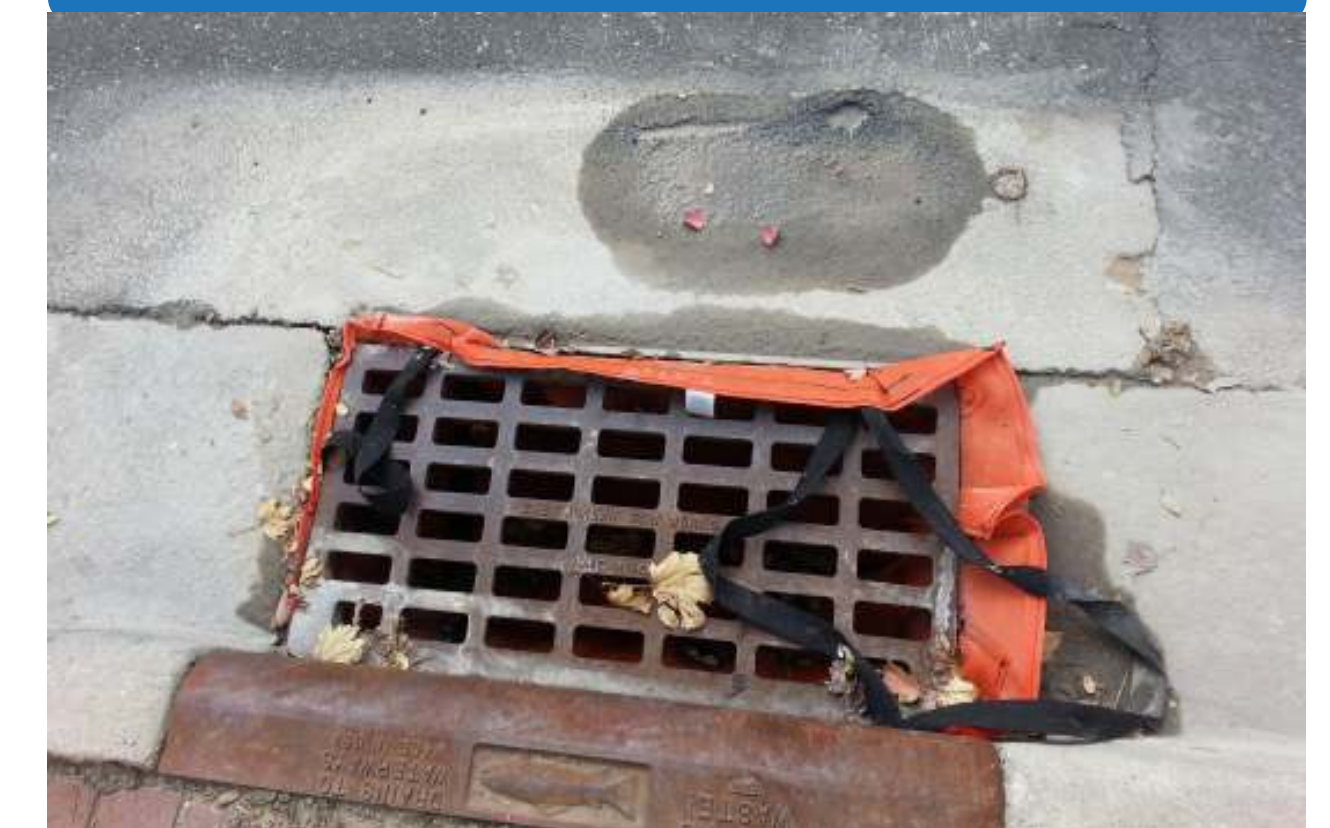


SEDIMENT CONTROL DO'S

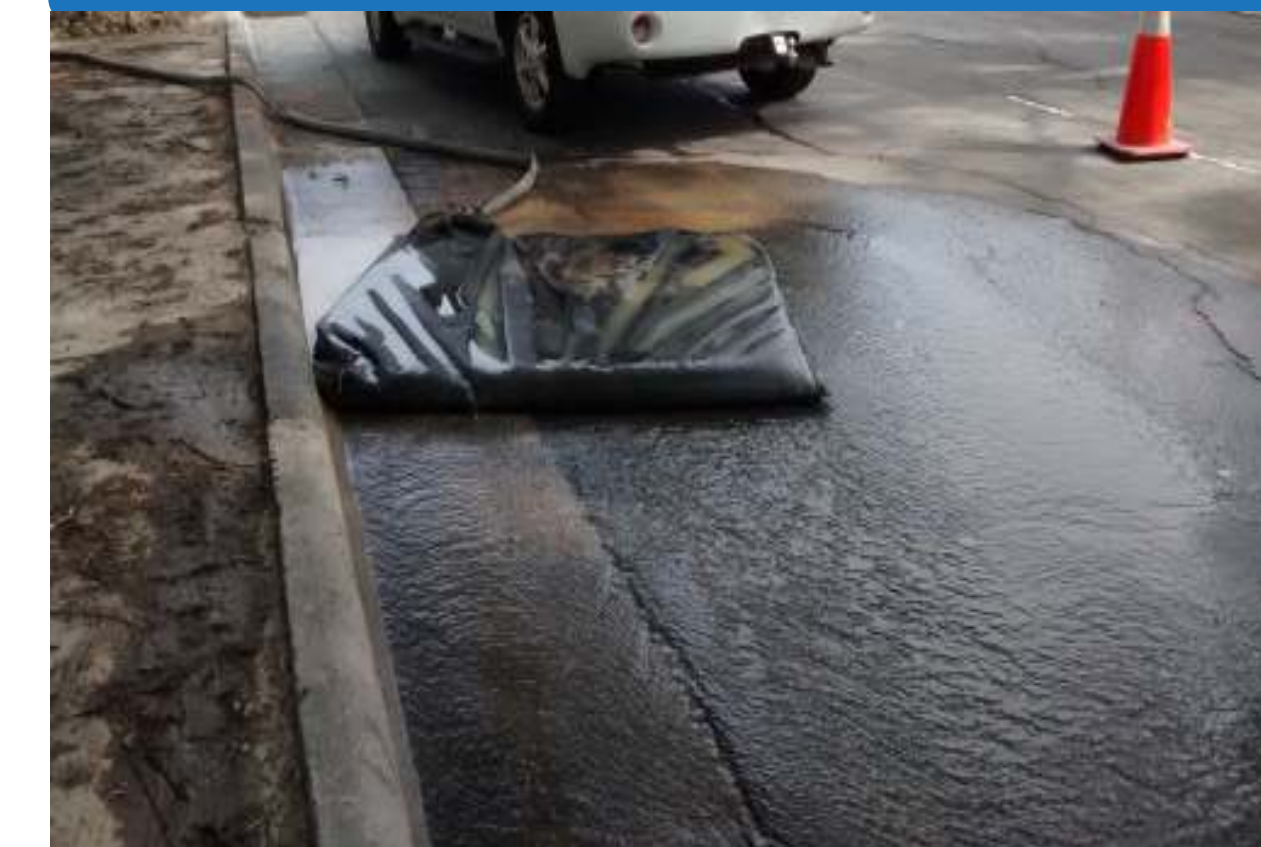
FILTER SOCKS/
STRAW WATTLES



FILTER BAGS



SPECIAL STILLING BASIN/
DEWATERING BAG



SEED AND STRAW
STABILIZATION



Remember:

Only Rain Down The Drain!



These are a few common types of best management practices used to control sediment during work in the right of way. Please use the sediment control practices that are most appropriate for your worksite. For further guidance, contact the City of Durham's Stormwater & GIS Services Division at (919) 560-4326 or visit www.durhamnc.gov/stormwater