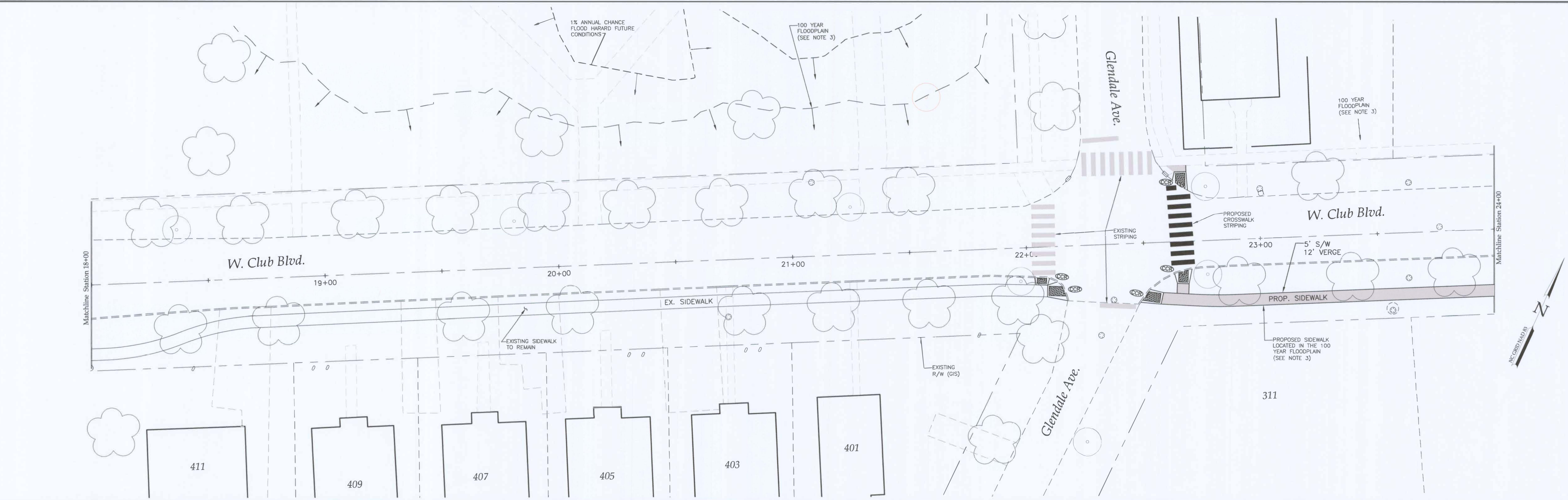
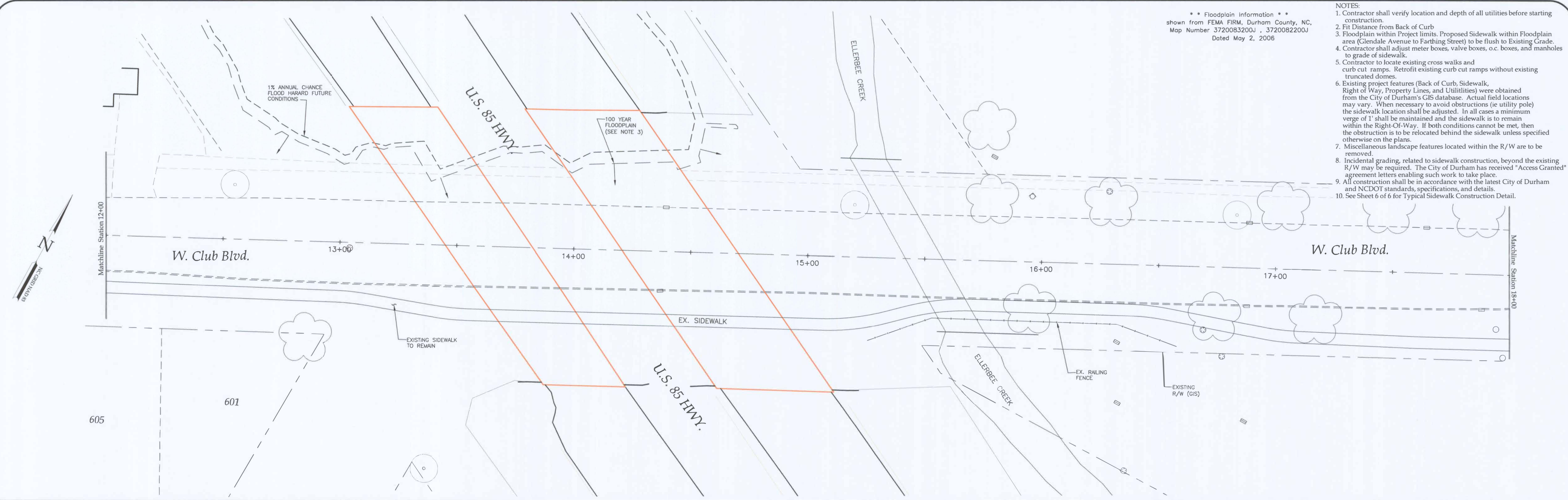


** Floodplain Information **
 shown from FEMA FIRM, Durham County, NC,
 Map Number 3720083200J , 3720082200J
 Dated May 2, 2006

- NOTES:
- Contractor shall verify location and depth of all utilities before starting construction.
 - Fit Distance from Back of Curb
 - Floodplain within Project limits. Proposed Sidewalk within Floodplain area (Glendale Avenue to Farthing Street) to be flush to Existing Grade.
 - Contractor shall adjust meter boxes, valve boxes, o.c. boxes, and manholes to grade of sidewalk.
 - Contractor to locate existing cross walks and curb cut ramps. Retrofit existing curb cut ramps without existing truncated domes.
 - Existing project features (Back of Curb, Sidewalk, Right of Way, Property Lines, and Utilities) were obtained from the City of Durham's GIS database. Actual field locations may vary. When necessary to avoid obstructions (ie utility pole) the sidewalk location shall be adjusted. In all cases a minimum verge of 1' shall be maintained and the sidewalk is to remain within the Right-Of-Way. If both conditions cannot be met, then the obstruction is to be relocated behind the sidewalk unless specified otherwise on the plans.
 - Miscellaneous landscape features located within the R/W are to be removed.
 - Incidental grading, related to sidewalk construction, beyond the existing R/W may be required. The City of Durham has received "Access Granted" agreement letters enabling such work to take place.
 - All construction shall be in accordance with the latest City of Durham and NCDOT standards, specifications, and details.
 - See Sheet 6 of 6 for Typical Sidewalk Construction Detail.



LEGEND	
⊗	MAINLINE VALVE
⊙	O.C. BOX
⊕	WATER METER
⊖	FIRE HYDRANT
⊘	BEND
⊙	BLOW-OFF
⊙	TAPPING SLEEVE & VALVE
⊙	WELL
⊙	SEWER CLEANOUT
⊙	SEWER MANHOLE
⊙	FLOOR ELEVATION LEFT
⊙	FLOOR ELEVATION RIGHT
⊙	GROUND ELEVATION
⊙	BASEMENT ELEVATION
⊙	CURB CUT RAMP
⊙	UTILITY POLE
⊙	STORMWATER MANHOLE
⊙	SURVEY/CONTROL NAIL
⊙	IRON PIN
⊙	MONUMENT
⊙	RIGHT-OF-WAY LINE
⊙	PROPERTY LINE
⊙	EASEMENT LINE
⊙	TYPE II CATCH BASIN
⊙	CUT SLOPE
⊙	FILL SLOPE
---	DITCH LINE
---	FIBER OPTIC CABLE
---	POWER LINE
---	POWER BOX
---	TELEPHONE LINE
---	TELEPHONE BOX
---	CABLE TV LINE
---	CABLE TV BOX
---	GAS LINE

CITY OF DURHAM
 PUBLIC WORKS DEPARTMENT
 APPROVED

ENGINEERING DATE 11/30/10
 STORM WATER DATE
 TRANSPORTATION DATE

NO.	REVISIONS	DATE	SYSTEM	DESIGN BY:	DESIGN DATE	CONSTR. DATE
			WATER			
			SAN. SEWER			
			STM. SEWER			
			STREET IMP.	JGADY	08/20/2009	
			SOIL & E.F.C.S.			

CLUB BLVD.
 SIDEWALK
 STA. 12+00 TO STA. 24+00

City of Durham Department of Public Works - 101 City Hall Plaza Durham, NC 27701 - (919)560-4326

Scale 1"=20' Sheet # 2 of 6

SHEET NO: SW-26/10