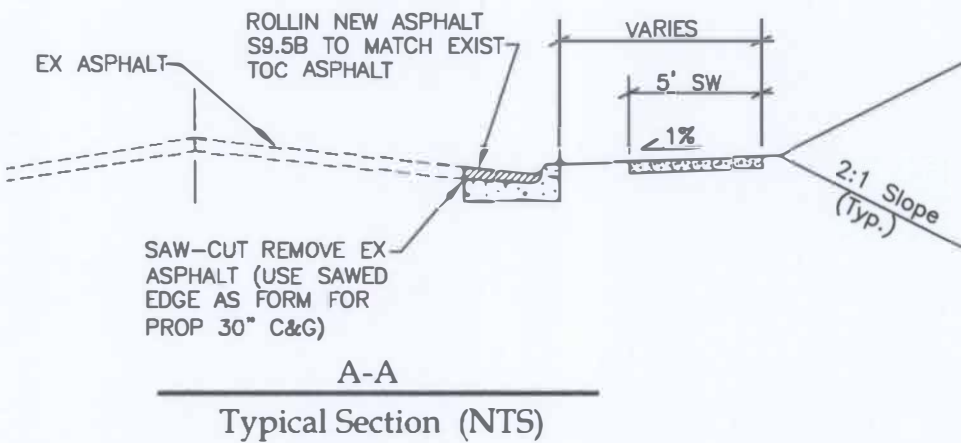
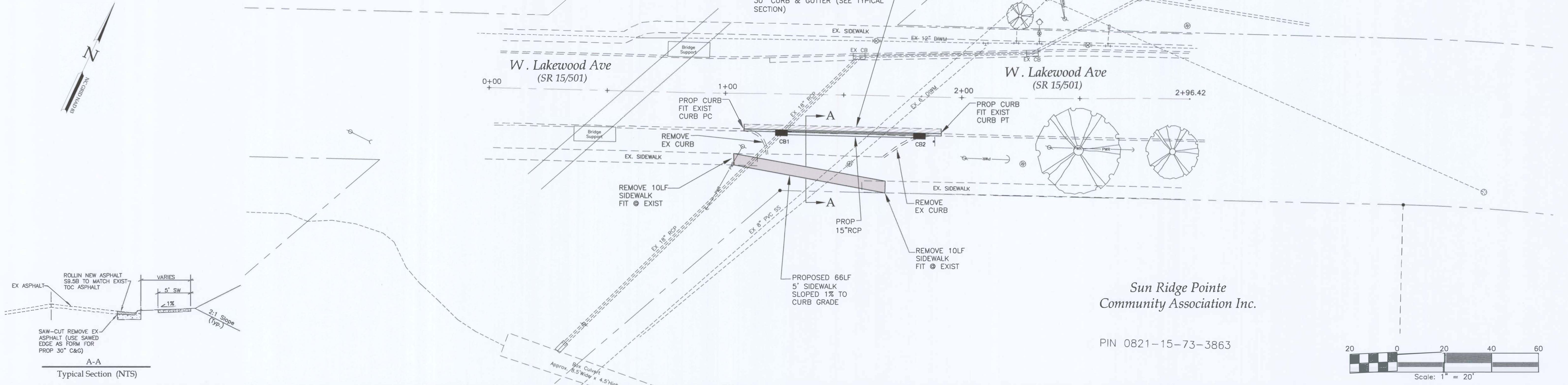
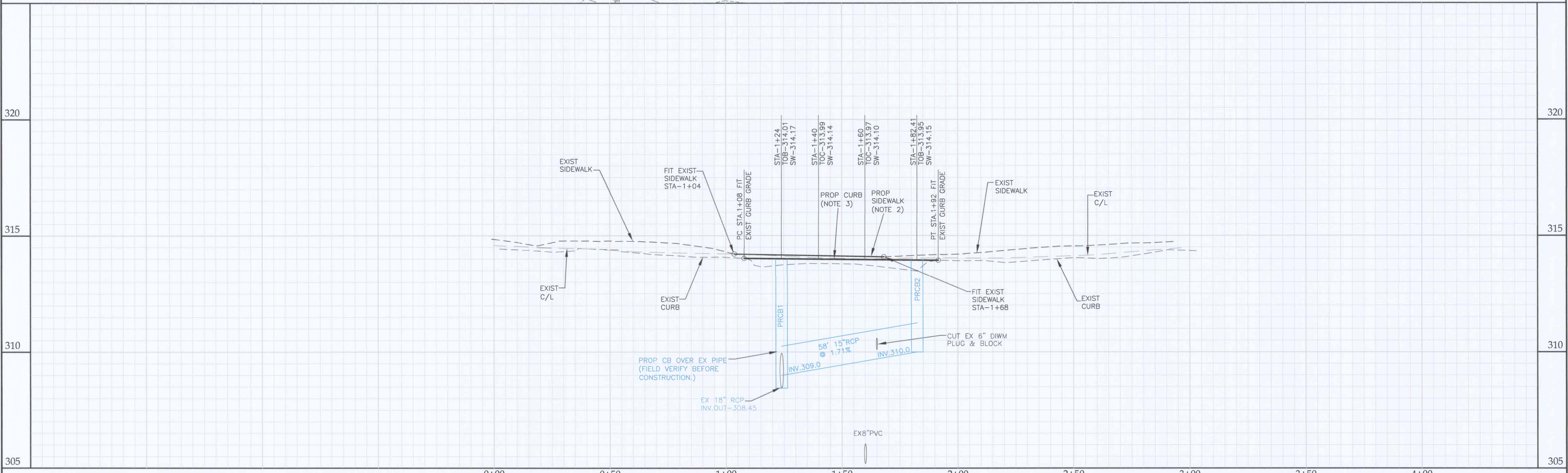
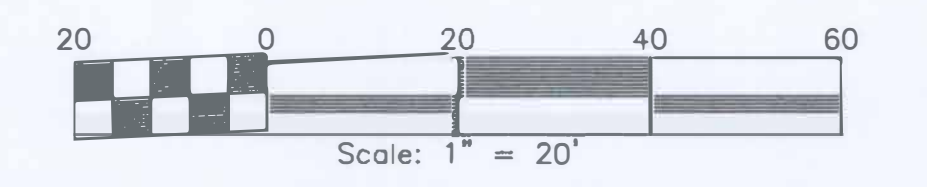


- NOTES:
1. Contractor shall verify location and depth of all utilities before starting construction.
  2. Proposed sidewalk to be installed with positive drainage toward curb.
  3. Proposed curb to be placed in line with existing curb.
  4. All construction shall be in accordance with the latest City of Durham and NCDOT standards, specifications, and details.
  5. No Floodplain within Project limits



Sun Ridge Pointe  
Community Association Inc.  
PIN 0821-15-73-3863



**LEGEND**

⊗	MAINLINE VALVE	○	SEWER MANHOLE	○	SURVEY/CONTROL NAIL	---	DITCH LINE	---	FOC	---	FIBER OPTIC CABLE
○	O.C. BOX	○	FLOOR ELEVATION LEFT	○	IRON PIN	---	POWER LINE	---	PWR	---	POWER BOX
○	WATER METER	○	FLOOR ELEVATION RIGHT	○	MONUMENT	---	TEL	---	TEL	---	TELEPHONE LINE
○	FIRE HYDRANT	○	GROUND ELEVATION	---	RIGHT-OF-WAY LINE	---	TEL	---	TEL	---	TELEPHONE BOX
○	BEND	○	BASEMENT ELEVATION	---	PROPERTY LINE	---	CTV	---	CTV	---	CABLE TV LINE
○	BLOW-OFF	○	CURB CUT RAMP	---	EASEMENT LINE	---	---	---	---	---	CABLE TV BOX
○	TAPPING SLEEVE & VALVE	○	UTILITY POLE	---	TYPE II CATCH BASIN	---	---	---	---	---	GAS LINE
○	WELL	○	STORMWATER MANHOLE	---	CUT SLOPE	---	---	---	---	---	---
○	SEWER CLEANOUT	○		---	FILL SLOPE	---	---	---	---	---	---

		<p>CITY OF DURHAM PUBLIC WORKS DEPARTMENT APPROVED</p> <p>DATE: 11/30/15</p>		NO.	REVISIONS	DATE	SYSTEM	DESIGN BY:	DESIGN DATE	CONSTR. DATE	<p><b>W. Lakewood Ave</b> (CURB &amp; GUTTER, SIDEWALK) STA. 1+00 TO STA. 2+00</p> <p>City of Durham Department of Public Works - 101 City Hall Plaza Durham, NC 27701 - (919)560-4326</p> <p>Scale: 1"=20" (HORIZ.), 1"=2" (VERT.) Sheet # 1 of 1</p>
<p>City of Durham Department of Public Works - 101 City Hall Plaza Durham, NC 27701 - (919)560-4326</p> <p>Sheet NO: <b>SW-26/15</b></p>											