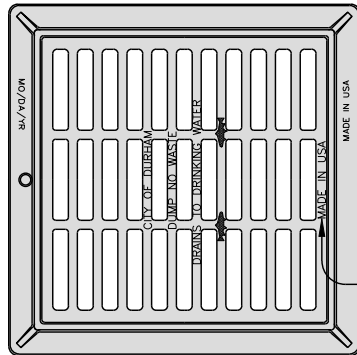
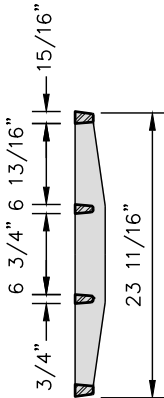
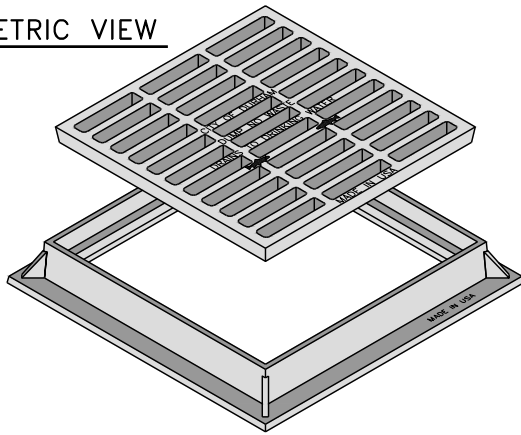


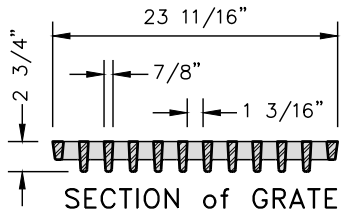
**ISOMETRIC VIEW**



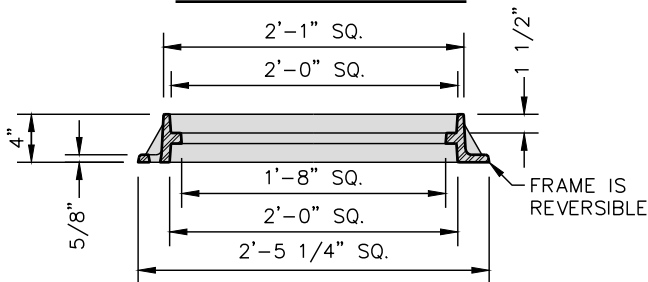
**SECTION of GRATE**

**PLAN OF GRATE & FRAME**  
WEIGHT OF GRATE= 132 LBS.

1/2" RAISED LETTERING SHALL BE CLEAN, CRISP AND CLEARLY LEGIBLE



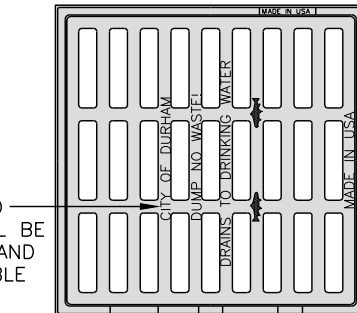
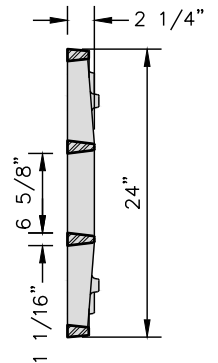
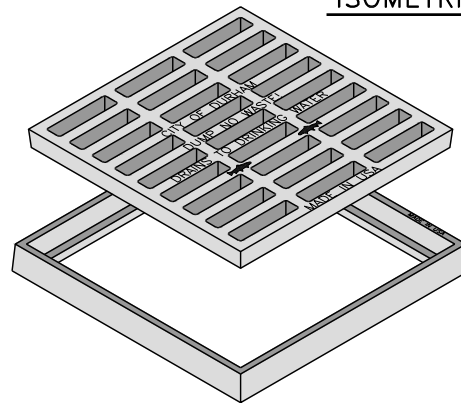
**SECTION of GRATE**



**SECTION of FRAME**  
292 SQ. IN. OPENING AREA  
WEIGHT OF FRAME= 120 LBS.

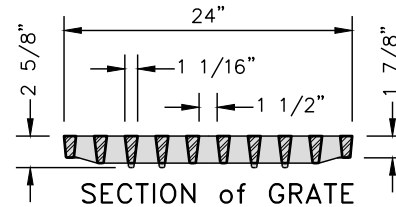
**TRAFFIC BEARING**  
24"x24" GRATE, & FRAME

**ISOMETRIC VIEW**

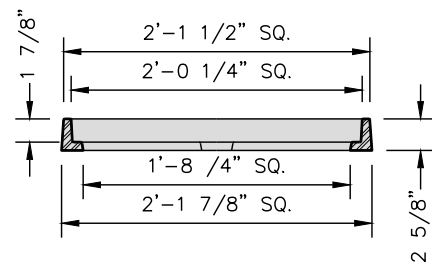


**PLAN OF GRATE & FRAME**  
WEIGHT OF GRATE= 126 LBS.

**SECTION of GRATE**



**SECTION of GRATE**



**SECTION of FRAME**  
268 SQ. IN. OPENING AREA  
WEIGHT OF FRAME= 65 LBS.

**NON-TRAFFIC BEARING**  
24"x24" GRATE, & FRAME

**NOTES:**

- See general notes [detail 638.01](#) and Casting Specifications [detail 638.02](#).

Details Provided by APPIAN Consulting Engineers - www.appianengineers.com



Dept. of Public Works  
101 City Hall Plaza  
Durham, NC 27701

**CITY OF DURHAM, NC**  
USE WITH THE STANDARD SPECIFICATIONS ONLY

Voice (919) 560-4326

www.durhamnc.gov

**24" x 24" GRATE and FRAME  
(TRAFFIC & NON-TRAFFIC BEARING)**

SCALE:  
Not to Scale

DETAIL#  
633.04

REVISION DATE:  
06/2017

SHEET#  
1 of 1