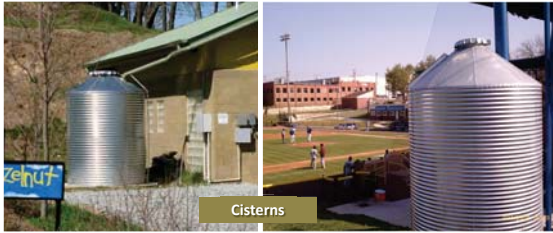


What are Stormwater Control Measures?

Stormwater Control Measures (or SCMs) is a general term that describes both *devices* and *activities* that control the quantity and quality of the stormwater that flows off our land and into our streams.



Cisterns

Collecting rain water allows use of valuable resources and keeps it from becoming polluted and running into our streams.



Dry Pond

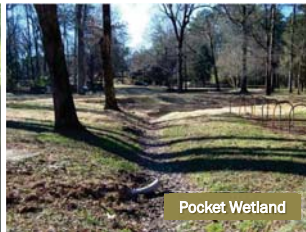


Wet Pond

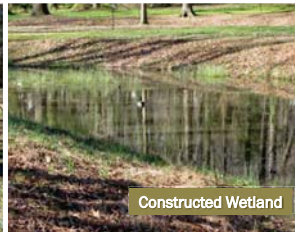
Ponds remove sediment and nutrients and help control the velocity of water in streams. Fast water erodes stream banks and can damage roads, bridges, and other infrastructure.



Floating Wetland



Pocket Wetland



Constructed Wetland

Natural and constructed wetlands treat stormwater runoff by removing nutrients, sediment, and other pollutants.



Level Spreader

Level spreaders convert concentrated stormwater flow into thin sheets of water spread, allowing it to soak into the ground.



Bioretention Systems



Rain Gardens

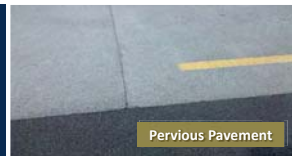
Bioretention Systems and Rain gardens treat stormwater while also adding beauty and diversity to the landscape.



Tree Pit Stormwater Filtration System

Small biological treatment systems can be inserted directly into a curb inlet to treat water before it is transported to our streams.

Pervious pavement allows stormwater to soak through into the ground, avoiding fast-moving runoff.



Pervious Pavement

Sand filters remove larger particles and provide the medium for biological treatment of stormwater.



Sand Filters



Everyone can do something to help improve our water quality